

# Annual Meeting

May 4, 2014

Winnetka Congregational Church

## Table of Contents

Report of the Chair.....	Page 3
<b>MINISTRY GROUP REPORTS</b>	
<b>WORSHIP GROUP</b>	
Liturgics.....	Page 5
Music.....	Page 5
Design and Environment.....	Page 5
<b>NURTURE GROUP</b>	
Care and Calling.....	Page 6
Communications.....	Page 6
New Members.....	Page 6
Women’s Society.....	Page 7
Women’s Society Benevolence.....	Page 7
<b>EDUCATION GROUP</b>	
Children’s Ministries.....	Page 8
Confirmation.....	Page 8
Special Events.....	Page 8
Servants.....	Page 8
Adult Enrichment.....	Page 8
<b>SUPPORT GROUP</b>	
Buildings and Grounds.....	Page 10
Financial Management.....	Page 10
Personnel.....	Page 10
Annual Giving.....	Page 10
Planned Giving.....	Page 11
<b>OUTREACH GROUP</b>	
Mission Doing.....	Page 11
Mission Giving.....	Page 12
Centennial Loan Fund.....	Page 14
Interfaith/Ecumenical.....	Page 14
<b>CLERK’S REPORT.....</b>	<b>Page 15</b>
<b>FINANCIAL REPORTS</b>	
Budget Summary.....	Page 17
Budget Review and Analysis.....	Page 18
Statement of Condition.....	Page 19
Cumulative Investment Reserves (CIR) Report.....	Page 20
<b>ORGANIZATIONAL CHARTS.....</b>	<b>Page 21</b>

# 2014 Annual Report of the Chair

May 4th 2014

This year has been a year of considerable “visioning” and planning as we move toward the retirement of Joseph Shank, our Senior Pastor for the past 22 years. Joe announced that he would retire this spring at our Kick-off worship service last September. That announcement set many things into motion, including the formation of a Senior Pastor Search committee, the search for an Interim Pastor to serve during the period between Joe’s retirement and when we call our new Senior Pastor and planning for the ways we wanted to celebrate Joe’s ministry with us.

The launching of the Strategic Planning Steering Committee last year was in anticipation of the transitions we would be facing and the need to develop our vision for where we wanted WCC to be in 2020. What grew out of that process were recommendations that included two strategic imperatives for WCC to be the vibrant and energized church we envision in 2020:

- 1) Growing WCC through Faith and
- 2) Successfully Transitioning Pastoral Leadership

Throughout this year we have participated in Phases 2 and 3 of the Vision 2020 process, using both large and small group involvement and renewed spiritual energy in worship. We extended our post worship fellowship time to include several all church lunches and initiated broadened outreach projects, with our “Jesus has left the building” events. Anticipating that the Congregation will approve the Vision 2020 plan at today’s meeting, we will embark upon implementation, Phase 4, in the fall.

With Joe’s announcement of his retirement plans, the 2nd imperative became an immediate priority. We initiated the process of forming a Senior Pastor search committee. More than 70 members were considered and the twelve member committee was appointed and commissioned in March. In addition, the Executive and Personnel committees began the search process for an Interim Pastor. We reviewed over 15 applicants and met personally with the five strongest candidates, ultimately calling Reverend Ben Bishop to be our Interim Senior Pastor beginning this summer.

Another goal accomplished this year was the implementation of the use of permanent Name Tags for members. They have been well received and help us further our continued goal of increasing member engagement.

In closing, I want to express our gratitude to our generous pastors: Rev. Joseph Shank, Rev. Jennifer Gleichauf and Rev. Bill Mueller. Their guidance through this year of planning for transition has been immeasurable. We are also grateful to Dr. Robert Harris and Elaine Clemens for the superb music that enhances our worship experience each and every week. We were also blessed with the gifts shared by Mallory Moore and Sarah Vollmer working with our Youth and Church School children. And last, but certainly not least – thank you to our wonderful staff: Floy Schrage, Ray Koch, Mark Dudek, Doug Coulter, Charlotte Lillquist and Waldek Ziolkowski who keep our church running smoothly and looking beautiful.

Thanks also to each of you for all the ways you have and continue to contribute to making WCC a “power in the service of God and Humanity”.

Judy Archambault



# Worship Group

LeAnn Pope and Dinny Cosyns

*The Worship Group is comprised of the Liturgics, Music, and Design and Environment committees. Working together, it is the responsibility of these committees to foster an environment that provides the central and centering experience of joyful, enriching, and spiritually uplifting worship for all members and visitors of WCC. During the year the Worship councilors and committee members, along with senior pastor Joseph Shank, have met quarterly to evaluate and discuss the total worship experience. In addition, the Worship councilors have met with the senior pastor on an as-needed basis to ensure that the worship experience at WCC continues to be positive and uplifting.*

*This Worship Group, along with a representative panel of other WCC members, provides formal feedback to the pastors on select worship Sundays during the year.*

*We are blessed to have these dedicated and gifted committee members working with us in the Worship Group. Most of them are able and have agreed to stay on and work with us in this next, exciting year.*

## LITURGICS

Jodie Stewart and Tom Evans

The Liturgics Committee is responsible for recruiting, organizing and training usher/host teams, greeters, lay readers, communion servers, and lay baptism participants. This involves working with many members during the course of a program year. There are eight usher/host teams, about twenty-five greeters, three communion teams and a group of forty-five people who have volunteered to read scripture, by arrangement, from time to time. JoAnne Brown is the capable captain of the communion teams. There are seven people on call to serve as lay baptism participants as needed. We are pleased to report that a number of new people have volunteered to participate in these opportunities this year, and for that we are very grateful. These services to WCC are crucial to our positive faith community worship experience. We extend heartfelt thanks to all those who have contributed their time and talents, and encourage those of you still searching for a “niche” to contact one of us so we can “select your spot” together.

## MUSIC

Julie McConnell and Diane Rasmussen

The music committee orchestrates our many and varied musical offerings as a part of Worship and, more broadly, for the community. Robert Harris and Elaine Clemens continue to provide outstanding musical leadership at WCC.

The Chancel Choir, under the leadership of Robert Harris, continues to perform an integral role in our worship services. The Choir’s musical offerings comprise a diversity of musical styles and composers from the 16th century through the present day, thus providing our congregation with a variety of choral music whose main function is to enhance the meaningful scriptures and texts to which the music is set, thereby adding another dimension to our services of worship.

Under the guidance of Elaine Clemens, participation in the children’s choirs has continued to grow and their perfor-

mances have truly augmented our worship experience. Elaine also led the 98th Annual Christmas Pageant, with a cast of 100+ children and youth. She has reintroduced the Bell Choir for youth and adults and brought together the WCC singers, a contemporary singing ensemble for youth and adults. Both continued to engage more WCC members this year and have received good reviews from our congregation.

The church’s two wonderful Music Interns, Guillermo Munoz and Dan Meinhardt, continue to contribute their talents in many ways.

Special concerts for the year included the 4th Annual Jazz Vespers with an awe-inspiring performance by the Willie Pickens Trio. On May 4th, Music Sunday, during the 10:00am worship service, the Chancel Choir sang “The World Beloved: A Bluegrass Mass”, accompanied by a Bluegrass ensemble.

The Chancel Choir’s new robes, which they began wearing in Advent, includes stoles in four colors which represent the four seasons of the church year. The Chancel Choir’s former (at least 20-year-old) robes will be organized, cleaned and donated to an organization in need. Next on the agenda will be the acquisition of new robes for the children’s choirs.

In January, the classical music radio station WFMT sponsored an event showcasing the WCC organ. Internationally known organist, keyboardist and teacher, David Schrader, held an all-day Bach immersion event at WCC in which he demonstrated various styles of music composed by Bach. When WFMT asked Schrader which organ in the Chicago area would be best suited to his purposes, without hesitation he said, “The organ at Winnetka Congregational Church.”

## DESIGN & ENVIRONMENT

Liz Paul, Susan Davis, and Heather Smith

The D and E committee has designed another set of banners with the help of Waldek for Easter. They include Lilies and Crosses and are in beautiful Spring/Easter colors. They will be hung in the Sanctuary on Good Friday.

The Urns out in front continue to be planted by Edwards three times a year, fall, winter and spring. We continue to use Anton's florist in Evanston for our Easter and Christmas deliveries to decorate the church. Ingrid Grace continues to do an amazing job with the Sunday flower donors.

This year we provided the Women's Society House Commit-

tee with funds from our budget for reupholstering a chair and purchasing pillows for the Centennial room.

Heather Smith joined the committee this year, and has been a huge help. A special thanks to Tammy Ehlers, Susan Temple and Heidi Law for helping out with Easter and Christmas decorating. We look forward to another year.

# Nurture Group

Teresa Anliker and Fred Gougler

## CARE & CALLING

Co-Chairs: Connie Casey, Nancy Phair,  
Sue Bush-Wilcox, Sally Wille, Alice Kepler

- The Care and Calling Ministry focuses on providing support and comfort for our church family and friends during times of need.
- Care and Calling has a group of church members who visit some twenty five homebound church members and/or can be called upon to prepare and deliver meals.
- Bill Mueller found a website in 2012 called "Take Them a Meal" which allows WCC members to sign up to take meals to those who are ill or in need. It is wonderful!
- Fred Gougler, on behalf of the Care & Calling Committee, regularly sends notes of friendship to church members and friends who have had surgery, an extended illness, or who have had a family loss.
- On September 19, we sponsored our annual luncheon at the Presbyterian Home for WCC member residents, church members, and staff.
- Care and Calling sponsored an Advent Prayer Vigil on December 4 and a Lenten Prayer Vigil on March 5 in the Little Chapel this year.
- Our two social events provide Care and Calling members an opportunity to rejoice in the C&C ministry. On December 11, the callers and clergy gathered at the home of Sally and Tom Wille in Glencoe to celebrate the season, sign Christmas cards and pick up poinsettias to deliver to each of our homebound members. On April 10 a spring luncheon was held in the Centennial Room and featured an address by Brit Holmburg from the Samaritan Center.
- After the Easter service, we delivered the chancel flowers to homebound members.
- On Sunday, May 11, we will recognize our Long Term Church Members during the church service. Those who have been members for 40 years or more are honored.
- Care and Calling asks for the responsiveness of the entire congregation in making sure that C&C becomes aware of anyone who is suffering and would benefit from the support of our ministry.

## COMMUNICATIONS

Anne West, Susan Gillette, Junia Hedberg

The website has become a major vehicle for those searching for a church to learn about WCC, and for our own members to keep up to date with Vision 2020 and other WCC projects. Emails are sent to more groups with information relevant to their interests, such as Adult Education programs, devotions, etc. sent to numerous people who have signed up to receive them. Waldek continues to provide excellent oversight for the website as well as the *Messenger* and *Bulletin*, and provides posters and banners throughout the year. A few more "stories" have been shared with the congregation, and we hope that will continue. Examples are introduction of our new Music Intern, mention of the nonmember who repairs toys for us, and a summary of the February trip to Haiti. Council Minutes are available on the website for members, as are other members-only materials. We have had good publicity for major events, such as the lectures by Father Pflieger and Dr. Tom Mockaitis, as well as publicity and posters for the Winnetka Interfaith Council's annual community Thanksgiving Service which was held at WCC in November. We applaud the worship councilors who have made name tags available, as these are a wonderful means of communication within the congregation and to visitors.

## NEW MEMBERS

Co-Chairs: Elsa De Jaegher and Susan Gillette  
Team Members: Kimberly Brya, Jane Dowding,  
and Gina Affolter

As Senior Pastor Joe Shank announced his impending departure in June 2014 in September 2013, we knew that this would be a challenging program year for the New Members Committee. So we endeavored to redouble efforts to identify, track and engage new comers to WCC.

We created a new sign-in vehicle and procedure for members and visitors called "Pass the Peace Pads" (thanks for the creative name, Kimberly!) which are passed during worship for everyone in the pew to sign in. The pads are meant to be passed down the pews before we Pass the Peace and greet one

another during the service so that members can take note of potential visitors in their pew and greet them by name. We have also encouraged members to invite visitors down to fellowship in Tolman Hall after the service and introduce them to other members.

Especially during the fall and leading up to Christmas, this new process helped us identify literally dozens of new visitors to WCC. We had a great new follow-up protocol as well. Within the first week after visiting WCC, visitors received a personally-delivered information packet from the church along with a special treat (store bought and sealed for safety) like cookies or candy.

About one-third of the time someone was home to receive it, otherwise it was left inside the storm door or in the mailbox. When people were present, they seemed surprised and delighted that someone had actually come to their door and paid a visit. It also allowed us to introduce ourselves, answer any questions, and collect additional information such as email addresses and phone numbers.

We have had a few snafus along the way. First, the Pass the Peace pads are handmade and need constant refreshing. Second, when there is a funeral or an event in the sanctuary they are picked up and put away—not always in the same place. Third, because our services are creative as opposed to strictly formatted, we Pass the Peace inconsistently—not every week.

Despite these challenges, we think the Pass the Peace pads and personal packet delivery are both successful and worthwhile concepts. We do need to recruit more members to our committee as the follow up, particularly around Christmas and Easter when we have lots of visitors, needs more hands to freshen pew pads and make packet deliveries. Also in our next cycle of printing we will include a space for email addresses, per Joe's request.

Four new member families joined in the Fall and nine interested visitors are meeting with Joe before Easter. So far no new members have joined since the first of the year.

Over the summer when the Interim Senior Pastor joins us, the New Member Committee plans to ask if he has suggestions about how to retain and grow our existing membership during the Senior Pastor Search Process.

## **WOMEN'S SOCIETY**

**Betty Williams Carbol**

The Woman's Society always welcomes any women of the church to be a part of our many activities. Our service to WCC and our outreach into the community and internationally takes many avenues.

Again this year we were pleased to present two \$1,000 scholarships to two high school seniors who have demonstrated dedication to Servants and to the activities of the church. We

also contribute to the youth group's Wish Tree and to their spring trip to the Dominican Republic.

The annual fall and May rummage sales bring together several hundred members and friends from the community. The profits from the sale are distributed by our Benevolence Committee to more than forty non-profit agencies in the Chicago area. Each agency is visited by committee members to determine their financial needs. None of the rummage proceeds are used for Woman's Society or church budgets. The Woman's Society relies upon contributions from individuals to support our programs and activities. Because of the increased success of our sales this year we were able to up the amounts we were able to give away.

Our monthly meetings are usually on the first Wednesday of the month and details are printed in a directory that is sent to women of the church in September. This year we have been having our programs at 11:00 in the Centennial Room. The attendance has increased because of this. A social time and a catered luncheon follow in Tolman Fellowship Hall. The last few years we have had one luncheon that was catered by an ethnic restaurant from the area. This year it was presented by La Casa de Isaac and Moishe a Mexican restaurant from Highland Park.

Other ways that we contribute to WCC are through books presented at baptisms, delivery of alter flowers, available help with weddings, receptions after memorial services, if desired, and maintaining the Tyrrell Library. We add books that we hope will be of interest to our congregation, with one book given each year in memory of women of the church who have passed away. We also support Harkness Outreach Center, which houses Rummage, Women's Exchange, Harkness House for Children, and the Children's Chapel. Our staff liaison is pastor Bill Mueller.

The Woman's Society selects a person each year that is honored as a "Super Senior" by the North Shore Senior Center. It is for dedicated service to our Woman's Society.

Since this is the last year of my presidency I would like to thank the wonderful Woman's Society Board of about 30 members who work so hard and are such a pleasure to lead. Everyone is dedicated to their particular jobs and that makes our mission run smoothly.

We always welcome any women of the church to be a part of our group.

# Education Group

Ed Katzman and Bill Hayes

*The traditionally strong WCC Christian Education program continues strong at all levels; Pre-K through Adult Enrichment. WCC Education is led by pastors Gleichauf and Mueller with strong lay assistance. Specialty programs such as Confirmation and Servant field work continue to be self-funded and thus off budget.*

*One weakness of the program continued: the lack of designated sub-committee heads for Youth Education. However, the 2020 Vision Plan addresses this issue by splitting the Education responsibilities between just two committees: Children and Youth Education and Adult Education.*

*Highlights of the past year, organized by age group, follow.*

**Pre-K – 6 Sunday School** continued to have classes in 2-year groupings (Pre-K-K, 1-2, 3-4, 5-6) to deliver WCC-appropriate curriculum and balance attendance using our volunteer parental teachers. This weekly theme was used across grades and thus allows for an opportunity for at-home family discussion. This year's theme was Woven Into God's World. As in past years, curriculum was developed over the summer by a small committee of parish teachers, who would welcome additional help. Parish parents then taught the Sunday classes. One paid staff in addition to those in the nursery rounded out the teaching cadre: Sarah Vollmer, the weekly JK/K teacher who developed her own curriculum, and the coordinator, who purchased materials, set up classrooms, managed the details of Sunday morning and communicated with teachers and assistants.

The 5th and 6th grade monthly Seekers program was continued and maintained attendance averaging 25. This program seems to be successful at building relationships and faith in this age group; however, managing the meeting with this level of attendance has become more difficult and there is a need for more parent participation.

Several special events were conducted. The Christmas Gift Fair, organized by Lisa Funk, Shelli Brown, Betsy Lewis, and Heather Dorr (intern), provided an opportunity for around 100 children to make gifts for their families. The Christmas pageant, lead by Elaine Clemens, continued to be popular with children and adults. We had about 110 participants. Elaine also continued to grow the youth choirs, who were regular participants in our worship services throughout the year.

May 11th will be Children's Sunday, an event we have held for four years, where church school teachers will be honored and worship will be led by the 5th and 6th grade students as well as the youth choirs.

**Confirmation** involved 15 eighth graders and 16 seventh graders, including those from a few families new to the church. Teresa Anliker led the lay ministry work. Pastor Jenny Gleichauf coordinated and oversaw the various activities and classes for the 8th grade confirmands. Heather Crimmins, long time WCC member and church school teacher, continued as our 7th grade teacher. Meetings/classes were held six

Sunday nights in the fall and another six Sunday nights in the winter. The curriculum continued from the past: 7th grader studied the Old Testament in the fall and the New Testament in the winter, while 8th graders studied Theology in the fall and Spiritual Disciplines/World Religions in the spring. Meeting on Sunday evenings with dinner first continued to generate good attendance.

**Special events** included three "Family Nights"— which were organized to include parents and siblings for a potluck dinner. While confirmands attended class, parents met with a pastor. Siblings spent the time with hired high schoolers in Als Dorf. These evenings were met with great energy and attendance. The fall retreat had one overnight and was conducted downtown in Chicago. Our fall retreat theme was the History, Forgiveness, and Justice. The winter retreat was cancelled due to low attendance. Other fellowship events included paddle tennis, ice skating, bowling, a dinner and movie night and a Christmas party. Confirmands also provided and served dinner at the Good News Community Kitchen once and six times for the Night Ministry. The program year will close on May 18, 2014 after faith statements were presented to Council on May 13th.

**Servants** participation level averaged some 13-20 students per week. Our Director of Youth was Mallory Moore, a student at Garrett. Our regular Servant meetings have been on Sunday's from 4:30-6:00 and included discussions, fun outings and service opportunities. Once again Servants handled the administration and coordination of the congregation's annual Wish Tree event. Our annual spring mission trip (the seventh trip) to the Dominican Republic attracted 23 students and 6 adult participants. The trip was followed by a Youth Sunday and Fiesta del Sol for the entire congregation on April 27. This trip, which is self-funded through an all-church luncheon, a Pancake Supper, and a Silent Auction, continued to be a significant focus of WCC's volunteer mission doing activities.

**Adult Enrichment** includes both weekly Sunday morning sessions as well as other seasonal and special and FOCUS (Focus On Community UnderStanding) offerings.

This past 2013-14 program year, Sunday mornings continued



the popular format of beginning in the Centennial Room with Fellowship and Refreshments at 8:45, immediately followed by Program at 9:00 which typically includes both audiovisual presentations followed by conversation.

This past Fall Quarter 2013, in concert with worship and other 2020 activities, our attention was on "Faith Matters Belief Matters." We began viewing and discussing media productions provided by animate featuring presentations on:

- God: Faith Is A Quest, by Brian McLaren
- Religion: Spirituality Is Not Enough, by Lillian Daniel
- Jesus: The Revolution of Love, by Mark Scandrette
- Salvation: Abundant Life Now, by Shane Hipps
- Bible: A Book Like No Other, by Lauren Winner
- Church: An Imperfect Family, by Bruce Reyes-Chow

This series was augmented by further viewing and discussing media productions on:

- Embracing Spiritual Awakening: The Dynamics of Experiential Faith by Diana Butler-Bass, based on her book that many of us read titled Christianity After Religion: The End of Church and the Birth of a New Spiritual Awakening
- Embracing An Adult Faith: What it Means to Be Christian by Marcus Borg
- Embracing A Life of Meaning: Discovering What Matters by Kathleen Norris

This past Winter Quarter 2014, we shifted gears to the subject of religion and science with the theme Thank God for Evolution: How the Marriage of Science and Religion Will Transform Your Life and Our World by Rev. Michael Dowd. The entire 8-week series was well attended and primarily lay led with presentations by:

- Dr. Charles Dowding, Engineering
- Rev. Dr. Paul Allen, Pastor Emeritus
- Dr. Chang Liu, Engineering
- Dr. Charles Shabica, Geology
- Laurie Morse, Ecology

This series also introduced us to, through the expertise of Chang Liu and Waldek, video recording and posting our presentations on our new church website.

Our Sunday morning 2014 Lenten series returned to the teachings of the Apostle Paul based on viewing and discussing Eclipsing Empire: Paul, Rome, and the Kingdom of God hosted by Drs. John Dominic Crossan and Marcus Borg. We considered Paul's Ethics and Theology, further inspired by a 3-week mini-series during this time on "Paul: Apostle to the North Shore," presented by Dr. K. K. Yeo, Harry R. Kendall Professor of New Testament.

We will conclude our Sunday morning sessions this Spring Quarter 2014 with one presentation on evolution and two on interfaith by:

- Dr. Melvyn Schwartz on A Mathematical Foundation for Belief in God
- Sr. Tahera Ahmad, Muslim Chaplain at Northwestern University, on Islam
- Rev. Jim Matson, The Zen Buddhist Temple of Chicago, on Buddhism

Two FOCUS programs, funded by our Robert Thomas Peace Fund, were presented and well attended on weekday evenings last fall 2013.

- Dr. Thomas Mockaitis presented a 3-week series that averaged about 50 attendees each session on the topic of "Current Events in the Middle East."
  - o October 22: "The Middle East in Historical Context"
  - o October 29: "Forces of Change: Secularism, Radical Islam and the Arab Spring"
  - o November 5: "U.S. Policy and Current Conflicts: Egypt, Syria, Israel/Palestine and Iran"
- The Rev. Dr. Michael Pflieger, Pastor of The Faith Community of St. Sabina, drew a crowd of 150 persons from our congregation, other congregations among our interfaith community, and the community at large on October 16 to discuss "A Culture of Violence: Why? And What Can Be Done?" Fr. Pflieger's stirring talk continues to inspire many in our congregation. That night alone we raised \$1500 for the St. Sabina Peace League which sponsors basketball tournaments hosted by NBA players. Since then, our Outreach Mission Giving team rallied us to designate half of our Christmas Eve offering (about \$4500) to St. Sabina Samaritan Fund to assist the needy in food, clothing and housing. The St. Sabina Social Service Store and its customers were benefitted by The Woman's Society that sponsored a Food Drive, the Men's Fellowship that sponsored a Men's Clothing Drive, and the entire congregation that contributed \$1000 to the Lenten Dairy Drive. We look forward to further ways that we can enhance such a relationship initially informed Adult Enrichment's FOCUS.

# Support Group

Harry Grace and Lyn McKay

## BUILDINGS AND GROUNDS

Jim DeVries, Kimberly Brya

Buildings and Grounds is charged with maintaining, and triaging when necessary, the structural facility, systems and grounds associated with Winnetka Congregational Church. We continue with the high standard of keeping our facility in excellent condition and repair to best serve our congregation now, and in the future. The Building & Grounds committee chairs, in concert with Floy Schrage, who is in charge of managing the office and facility, as well as Ray Koch and Mark Dudek, work to maintain the church, as well as anticipate improvements and necessary repairs.

For the 2013 calendar year, the B&G committee completed three main projects:

- An Energy Audit: Faith Place, a not for profit that provides council for houses of worship on environmental matters, provided an energy audit for the church facility. For a building that is 78 years old, it performed quite admirably. The minor issues identified included drafty windows and doors. A full report is available in the Business Managers office.
- Repaired the Portico: Usual and customary wear and tear required that the front Portico be repaired. This was completed in summer/fall of 2013.
- Repainting: In the summer of 2013, we painted the outside of all the sanctuary windows and the cupola on top of the little chapel.

The Exploratory project for the year 2013 included the use of solar energy as a resource for the church and obvious energy saving opportunity depending on viability and feasibility. This is only in an exploratory mode at this juncture.

We continue to work to keep the treasure that is Winnetka Congregational Church as a lovely House of Worship for All People, for our present, as well as the future. The committee is diligent about being cognizant about costs and finding ways to be prudent with the church's' budget, particularly on those items we can control. We are grateful for the hard work and commitment of Floy Schrage, Ray Koch and Mark Dudek in helping us maintain our church.

## FINANCIAL MANAGEMENT

Tom Temple, Bill Sholten

The Financial Management Committee (FMC) met throughout 2013 continuing the review and management of the Cumulative Investment Reserves (CIR): essentially, WCC's endowment fund. Portfolio rebalancing was completed quarterly as stipulated in the Investment Policy Statement (IPS)

adopted in 2006. Our meeting agenda material and the IPS are available for viewing via the Church Office. Through the use of Vanguard index funds, we have kept portfolio costs to less than .2%. 2013 performance was +18.28% with an asset allocation of 70% stocks, 25% bonds and 5% cash. We also worked with the church Treasurer to strengthen WCC's financial practices and procedures in order to benefit WCC today and future stewards of the church's finances.

## PERSONNEL

Peter Egan, Greg Klein

This year was another busy and challenging one. 2013 was the third year of our new staffing model. It has worked well and allowed us to stay within our (reduced) personnel budget again. Further, the strong budget position of the Church and the new staffing model allowed us to provide merit lump sum awards last year for our ordained and lay staff.

In 2013/14 we completed a three-year pastoral transition planning project. This culminated in Joe's announcement last September of his June 2014 retirement plans. Further, we worked closely with the Executive Committee on a search for our Interim Senior Pastor. Recently, the church announced we have called Reverend Ben Bishop as Interim Senior Pastor. He will be introduced to the congregation in June.

This year our strong and stable staffing supported many Church programs that are detailed elsewhere in this material. We continue to work closely with Floy Schrage, Business/Facilities Manager, on the monitoring of all personnel-related budget items. As personnel expense continues to be, by far, the largest portion of our annual budget, this is a continuous process.

## ANNUAL GIVING

Liz Butler, Steve Huels

Overall, we had a very good pledge drive. To date, we have received 208 pledges totaling \$962,000. That's \$22,000 better than last year at this point. It's also \$12,000 better than the 2014 budget amount for pledged contributions. One note of concern is the number of pledges is down from last year despite the new pledges.

This year, in deference to the congregational focus on Vision 2020 initiatives, we did not create the usual public communication to members regarding pledging. Instead, all communication was done with members directly through letters, emails and phone calls. This approach may have contributed to the lower number of pledges.

We continue to seek a balanced approach that keeps the congregation informed about the importance and mechanics of pledging and the importance to the health of our church. Your feedback is always appreciated.

Summary of pledges to date:

1. 88; were the same in 2013 and 2014
2. 28 have decreased from 2013
3. 73 have increased over their 2013 pledge
4. 19 new pledges in 2013
5. 20 pledges from 2013 (those over \$1000) are outstanding or have stopped because of moves, deaths, etc.

Summary of current pledge distributions:

Pledged Contribution	Pledges	Total Value	As a percent of Pledged Value	As a percent of Pledges
\$10,000 or more	21	\$507,253	53%	10%
\$5,000 to \$10,000	28	\$164,134	17%	13%
\$3,000 to \$5,000	42	\$147,310	15%	20%
\$1,000 to \$3,000	74	\$127,048	13%	36%
Less than \$1,000	43	\$16,550	2%	21%
	208	\$962,295	100%	100%

The distribution of pledges improved slightly over 2013. WCC is blessed by the generosity of a few members that provide over half of the pledged contributions. As a congregation, our long term health will depend upon increasing contributions from more of the membership.

## PLANNED GIVING

Clyde McGregor, Paul Van Zuiden, and Mike Walther

The Planned Giving Team focuses on gifts to WCC through

wills, trusts and other estate planning documents. We help congregation members understand the importance of planned gifts and the planned giving options that are available. Congregation members who name WCC in their estate plans become members of the WCC Covenant Society.

Over the past three years, through a series of meetings with Council and the Covenant Society, and one-on-one meetings the Planned Giving Team has discussed planned giving with over 100 Congregation members. We have added a dozen new Covenant Society members and have a number of families in the process of completing the documentation to become members.

The long-term goal is to build total investment reserves to four to five times core operating expenses. Over the past three years, WCC has received approximately \$500,000 in new gifts. We have also received documentation from over 30 families regarding their plans for future gifts to the Church.

The General Restricted Endowment Fund is the key fund. The goal is to add as much as possible to this fund because it provides the most flexibility for the church among the principal protected funds. However, for members who prefer to direct their planned gift to a specific area, Specific Purpose Restricted Endowment Funds have been established for Education, Mission, Music, Pastors, and Facilities and Grounds.

One of the key on-going program activities is discussing planned giving with congregation members as they begin their estate planning. If congregation members would like more information about WCC's Planned Giving Program, they should contact one of the Co-Chairs.

# Outreach Group

Bruce Kelly, Xerxes Bhote

## MISSION DOING

Jeanne Ebersole, Bill McKay

The role of the Mission Doing Committee is to facilitate opportunities to connect the skills and resources of our congregation through active ministry and outreach to those with the greatest needs in our community and the greater world. Over the past year, the Mission Doing fellowship members have coordinated a number of opportunities enabling WCC members and families to make a difference through hands-on ministry.

1. **A Just Harvest** (formerly Good News Community Kitchen) / Good News Community Church (GNCC)- In addition to providing a financial contribution to A Just Harvest (Mission Giving committee), WCC continues to be a hands-on mission partner:

a. WCC continued to purchase, prepare and serve dinners to 175 plus people the first Monday of each month at A Just Harvest in Rogers Park. Bob Ebersole purchases and delivers the food and Laurie Morse coordinates the volunteers on a monthly basis. Our congregation's Youth (confirmation and servants) served multiple times.

b. Wish Tree – Many families participated in buying gifts and fulfilling Christmas wishes for 300 children. In addition, about 50 church members helped to deliver the gifts for these children and their families providing refreshments and crafts at a reception.

c. Backpack / school supply drive – School supplies were purchased for GNCC Church School youth again this year using money from the Mission Doing budget and donations. The backpacks were delivered directly to GNCC to hand out

at the end of their one-week bible school program.

## 2. Mission trips –

a. Twenty-three of our Servants high school youth group completed a spring break mission trip, returning to the Dominican Republic. Pastor Jenny Gleichauf led the trip and recruited a number of new chaperones this year. The chaperones were impressed with the cohesiveness of our youth group and their dedication to the work completed. Further, the congregation was very generous in their support of the trip, allowing us to raise \$28,000 in support required of the trip, the most ever!

b. Pastor Jenny was instrumental in helping us to meet one of our long-term goals of a weekend mission trip. In February, she joined, 10, current and former young adult members of WCC on a weekend Mission Trip to Haiti through a non-profit group called Mission Results. The group worked on a number of projects at the community center, including a railing, a mural and a lifeguard chair. They also visited orphanages and went to church. They raised \$2,000 in support of their efforts.

3. **Family Promise** – Our relationship with Family Promise Chicago North Shore, an interfaith social service agency to provide help to families in homeless situations, continued the past year. The network now comprises 21 host and 7 support congregations in the North Shore who are committed to host families in homeless situations in their facilities for a week at a time. WCC has provided facility, meals and volunteers to host 3-4 families in our church for 1 week at a time on 4 separate occasions over the course of last year. Our coordinators this year included Nicole Jakob, Jen Lawless and Meg Hayes who dedicated much time to wonderfully support this mission. Nicole has now been fully replaced by Jen in the Food Coordinator role. Although, this initiative continues to be an excellent opportunity for “Hands-on” mission work for WCC members of all ages right in our WCC facilities, we continue to struggle to fill the volunteer coordinator slot and Jeanne Ebersole has taken on this role temporarily while we continue our search. Further, we have indicated to Family Promise that we will not host more than 3 times each year due to the pull on our available volunteer resources. We are especially thankful for Nicole’s contributions over the many years that she served as a coordinator. Congregation member Brek Peterson, continued his support of Family Promise as a member of their Board this year as well.

4. **Food Drive** - Men’s Fellowship initiated a Dairy Drive during the Lenten season in support of the St. Sabina Social Service Store. Dairy item donations are scarce and most welcome by those who benefit from the free food and clothing in this impoverished neighborhood. They raised \$500.

5. **Jesus Has Left the Sanctuary** - A new initiative this year included renewing our energy for all church Mission Doing activities as part of the Fall Phase 2 Strategic Planning experience.

a. Mike Jakob, a member of the 2020 Vision Team, led a small group of volunteers headed by Dennis Wellington and Carrie Alt who helped to source an all church, intergenerational “Jesus has left the Sanctuary” event on November 10. More than 125 members of all ages and stages performed 2-5 hours of service work in support of: a) New Trier Food Pantry with 50 baskets of Thanksgiving stuffs and handmade cards, b) Harkness Outreach Center doing painting, window washing, landscaping and staining, c) making 20 handmade blankets for Family Promise guests, d) writing over 150 letters to active military and homebound members of the congregation, e) collecting and packaging donations for Open Books, and (f) preparing over 200 sack lunches for A Just Harvest. Feedback was universally positive and was followed up with two other projects.

b. Pastor Jenny coordinated a “Jesus has left the Classroom” experience for our church school youth. More than 50 children helped complete projects for A Just Harvest, homebound members of WCC and a reading program in Highland Park from Tolman Hall.

c. Bill McKay coordinated and led a Lenten Season Work Day in conjunction with Good News Partners in north Roger’s Park. Good News Partners is a ministry dedicated to fighting homelessness and providing affordable housing in Chicago’s north Rogers Park neighborhood. Sixteen WCC workers, including three of our youth, spent the day helping out with various projects primarily involving cleaning a recently vacated residential apartment as well as the New Life Interim Housing for Women and Children facility which provides a temporary home for 30 some homeless women and children. A number of members and friends of WCC, including Bess Hardware, generously contributed paint and cleaning supplies for our use.

In closing, the mission doing co-chairs would like to thank the many members of our congregation who participated in these mission doing opportunities and made a difference in the lives of those in need.

## MISSION GIVING

**Chairs: Sue Wellington, Susan Snyder**

**Committee Members:** Joanne Baker, Elsa De Jaegher, Ray Gillette, Becky Hurley, Bill Mueller, Bill Sholten, Patti Van Cleave, Anne West. We welcome our newest member Shari Felty.

**Mission:** MGC funds programs that provide creative solutions in addressing basic human needs: food, clothing, shelter, education and basic human rights. We focus on: Chicago metro area, small (<\$1mm in revenues)

In 2013 we gave 21 grants ranging from \$1000 to \$7,000. Total amount given \$117,600. Funds are sourced from pledges and sharing of Chicago Charitable Trust Fund with Benevolence.

Applications for 2014 funding are due June 1st. Funds will be allocated in December 2014.

The agencies receiving funding in 2013 are as follows:

#### **A Just Harvest**

A Just Harvest is one of the few places in metropolitan Chicago where hungry persons can go any day of the year to receive a free, hot nutritious meal. A Just Harvest places no restrictions on the geographical location of its patrons or their level of income. This agency receives our largest grant, \$10,000.

#### **Career Resource Center**

CRC is a re-employment resource that empowers and helps job seekers navigate the job search process.

#### **CASA (Court Appointed Special Advocates)**

CASA provides trained advocates for children who are wards of the state due to neglect and abuse. The advocates receive intensive training and are appointed by the court to represent the child.

#### **Dorothy Stang High School**

Dorothy Stang Popular Education Adult High School is the only bilingual high school completion program serving Latino adults, ages 25 or older, in the Midwest. Graduates of the program receive a state-certified high school diploma through Aspira Inc. of Illinois or Josephinum Prep School—both accredited Illinois high schools.

#### **Evanston School Children**

Evanston School Children's Clothing Association (ESCCA) provides school clothing for all Evanston/Skokie District 65 K-8th grade school children in need. Each year we provide a full wardrobe of clothing and shoes to 500-600 children. Our clothing assistance services are performed efficiently and discreetly and always keep the dignity of the families in mind. Evanston

#### **A Just Harvest**

A Just Harvest is one of the few places in metropolitan Chicago where hungry persons can go any day of the year to receive a free, hot nutritious meal. A Just Harvest places no restrictions on the geographical location of its patrons or their level of income.

#### **Family Promise**

Family Promise provides emergency shelter, meals and other services to families who are temporarily facing homelessness.

#### **Haven Youth and Family Services**

Haven helps youth and families in crisis by offering 24-hour crisis intervention and emergency housing for adolescents, as well specialized programs focused on crisis prevention and intervention.

#### **Hope Community Outreach**

Chicago, Illinois

#### **Housing Opportunity Development Corp.**

HODC's mission is to expand the stock of fair housing that is affordable to low- and moderate-income households throughout the northern suburbs. It purchases, develops and rehabs rental and owner-occupied affordable housing units on its own and through joint ventures with other housing developers.

#### **Interfaith Housing Center**

The Interfaith Housing Center advocates for fair and affordable housing. It serves individuals facing housing discrimination, foreclosure and other housing issues. It also provides education and advocacy for fair and affordable housing.

#### **Family Promise**

Family Promise Chicago North Shore provides families with young children who are homeless, or at risk for becoming homeless, with a supported pathway to self-sufficiency. By providing both day and night time havens, nutritious meals, transportation, and social services to address issues that may have contributed to the situation, Family Promise gives parents a chance to focus on finding employment and provides guidance to create a plan to return to permanent housing. Winnetka Congregational Church three times a year houses families in this program at our church.

#### **Holy Sanctuary Community Church**

Greater Rose Hill Outreach:

We help support a weekly free lunch program open to anyone in the community. Over 300 meals are served weekly.

#### **Lakeview Academy**

Lakeview Academy is a small, diverse, private alternative high school which offers a high-quality state-recognized diploma program for students who have "fallen through the cracks" in other high schools.

#### **Literature for All of Us**

This organization's goal is to engage adolescent girls and teenage mothers in book groups in order to help young women free their imaginations explore their strengths and build their self-esteem.

#### **Meals at Home**

This organization fosters health and contributes to individual well-being and independence by delivering nutritious meals, medically prescribed diets, and providing other supportive services to the homebound, elderly, disabled and others temporarily unable to care for their nutritional needs.

#### **New Life Baptist Church**

New Life Baptist Church serves the homeless, needy, ex-offenders and troubled individuals.

#### **Peer Health Exchange**

PHE works with high schools that lack health education and in which the majority of the students live at or below the poverty line. These students experience a disproportionate number of serious health risks ranging from teenage pregnancy to obesity. PHE trains college students to teach a comprehensive health curriculum in order to give teens the knowledge and skills they need to make healthy decisions.

#### **Samaritan Counseling Center**

SCC provides a unique kind of psychotherapy that incorporates faith and spirituality in its counseling.

#### **Sembrando El Futuro**

Serving West Humboldt Park, Sembrando provides a safe place for children to come to do homework, get tutoring and have fun.

### **Star of David Ministries**

House of David Outreach Ministry provides food, clothing and basic necessities for the poor, unemployed, underserved and homeless individuals in the West Division / Central Ave. neighborhood of Chicago.

### **Streetwise**

Streetwise helps the homeless by providing an array of social services and by publishing a weekly magazine that is bought wholesale by its client vendors and resold at a profit. The model combines the opportunity for gainful self-employment with supportive services to assist the vendors on the road to financial self-sufficiency.

### **Third Unitarian Church**

Serving the Austin neighborhood, the church offers \$500 scholarships to qualifying college-bound high-school seniors.

### **United Church of Rogers Park**

The church provides an after-school program that provides a safe environment with activities and enrichment programs for children in the neighborhood.

### **Uptown Baptist Church**

The goal of the church's Monday Fellowship Dinner is to feed the hungry and provide spiritual support. With the help of volunteers, the ministry provides a healthy meal to the needy each Monday night.

## **CENTENNIAL LOAN FUND**

**Barbara Malmquist, Chris Ball**

The Centennial Loan Fund was established in 1974, WCC's centennial year, to create a perpetual and revolving loan fund to benefit Protestant churches in Chicago and suburbs. Loan applications and supporting financials from churches seeking funds for capital improvements to church property or to finance church-related programs necessary to the existence or growth of such churches are reviewed by CFL committee members followed by on-site inspections. Approved loans are typically made for a five year time period at low interest rates, secured by a mortgage note on the property.

Currently, the Fund has three loans outstanding and one being processed. One to Peoples Church at 941 W. Lawrence, in Uptown, with a balance due of \$17,155.83; a second to Ravenswood Presbyterian Church, 4300 N. Hermitage Ave., Chicago, with a balance due of \$9,959.41, and a third, to New Life Baptist Church, 11026 S. Indiana Ave., Chicago, with an outstanding balance of \$19,681.97. A fourth loan has been approved for 1st Congregational Church of Downers Grove in the amount of \$40,000 to be used for facility repairs and improvements. All outstanding loans are substantially current.

After the loan is made to 1st Congregational Church of Downers Grove, the CLF will have a balance of \$267,753 available for loans to deserving churches in the Chicagoland area. Identifying churches that are looking for a loan rather than an outright grant remains a challenge.

## **WINNETKA INTERFAITH COUNCIL**

**Junia and Andy Hedberg, Pat and Bob Hastings**

The Winnetka Interfaith Council (WIC) met five times this year in various faith communities in Winnetka and neighboring communities. The WIC has recently broadened its membership to include a representative of the Muslim faith, Muslim Community Center of Morton Grove, as well as St. Philip the Apostle Catholic Church in Northfield and Church of the Holy Comforter in Kenilworth. Continuing members are: Baha'i Community, Christ Episcopal, Muslim Community Center of Morton Grove, Saints Faith, Hope and Charity Catholic Church, Samaritan Counseling Center, Temple Jeremiah, Winnetka Congregational Church, Winnetka Covenant church, Winnetka Presbyterian Church. The Mission of the WIC is to bring together diverse faith entities to encourage interfaith communication for the enlightenment of all, share programs and other activities of common interests, encourage on-going relationships among clergy and laity, and work together in service to area communities.

At each meeting of the WIC, a representative of the host congregation discusses that faith and the nature and activities of the congregation, and leads us in prayer. We also hear from a representative of an area social service organization so that we can share the information with our clergy and congregation. Several committees also support the work of the WIC behalf of the community – Thanksgiving and Special Needs. A new website is nearly complete. It is hoped that WCC will link to that website and vice versa to increase interfaith understanding and dialogue.

This year, thanks to the Internet, we have been able to share various congregations' special activities, such as Father Pflager's visit to WCC and Tom Mockaitis' talk at Adult Education. We encourage each to share that information with members of their congregations. This year, too, WCC hosted the annual WIC Interfaith Thanksgiving Service, which was relatively well attended and highly praised by those who did attend. Rev. Bill Mueller, Dr. Robert Harris, and Waldek Ziolkowski were instrumental in planning and implementing much of the publicity and success of the service. The speaker was Dr. Howard Sulkin, President Emeritus of the Spertus College of Judaica and the Parliament of the World's Religions. Dried and canned food were collected for the New Trier Food Pantry, and a free will offering was shared with the Food Pantry and the Parliament of the World's Religions.

# Clerk's Report

## MEMBERSHIP SUMMARY

Information correct as of May 4, 2014

	2009-2010	2010-2011	2011-2012	2012-2013	2013-2014
	951	968	851	863	873
<b>ADDITIONS:</b>					
Confirmands	14	0	16	18	0
Baptism/Confession of Faith	0	0			1
Reactivation	0	0	0	0	1
Reaffirmation of Faith	7	5	20	2	3
Transfer of Membership	8	1	8	9	1
Total Additions:	29	6	44	29	6
<b>RELEASES:</b>					
Transfer to Associate	0	0	0	0	0
Transfer to Friend	0	0	1	0	0
Letter of Transfer	3	3	7	2	0
Transfer Inactive	0	98	1	0	8
Withdrawals	0	0		0	0
Deaths	9	22	23	17	13
Total Releases:	12	123	32	19	21
Net Change:	17	-117	+12	+10	-15
Active Membership (year end):	968	851	863	873	858
<b>PERSONAL SERVICES:</b>					
Baptisms	16	5	8	5	7
Weddings/Vows renewals	4	3	9	5	11
Memorials/Interments	15	28	33	29	35
Total Personal Serv:	35	36	50	39	53

**DECEASED MEMBERS**

Marion Agnew 1/4/2014  
 Liz Anderson 10/2/2013  
 Eleanor DeVries 2/16/2014  
 Mary Ellen Frissell 4/9/2014  
 Patricia Haines 8/15/2012  
 Leah Hamman 10/11/2013  
 Gail Johannson 8/1/2013  
 Lorraine Krucks 10/6/2013  
 Norris Love 3/27/2014  
 William Meier 3/4/2013  
 Chuck Trangsrud 9/1/2013  
 Peter Wirtz 7/6/2013  
 Robert Woolson 4/18/2014

**MEMORIAL SERVICES**

John Ball 6/14/2013  
 Lily Beckman 3/1/2014  
 Keki Bhote 5/7/2013  
 Mark Cardoza 10/11/2013  
 Eleanor DeVries 3/8/2014  
 T. J. Farrell 8/28/2013  
 Leah Hamman 11/2/2013  
 Charles Hussey 1/5/2013  
 Norris Love 3/31/2014  
 William Miller 7/13/2013  
 Bert Sullivan 10/5/2013  
 Ernest Wentcher 9/27/2013  
 Peter Wirtz 7/11/2013  
 Diane Wolf 10/25/2013

**INTERMENTS**

Doris Anderson 9/24/2013  
 Frank Anderson 9/24/2013  
 John Ball 6/14/2013  
 Lois Davis 7/5/2013  
 T.J. Farrell 8/28/2013  
 Leah Hamman 11/2/2013  
 Dorothy Keel 9/16/2013  
 Ted Killingworth 9/6/2013  
 Lorraine Krucks 10/11/2013  
 William Meier 11/26/2013  
 Alexander Milne 6/14/2013  
 James Ramsay 6/17/2013  
 Raul Sosa 4/29/2014  
 Mary Jane Snyder 10/5/2013  
 Robert Snyder 10/5/2013  
 Bert Sullivan 10/5/2013  
 Everett Weaver 6/17/2013  
 Rita Weaver 6/17/2013  
 Ernest Wentcher 9/27/2013  
 Diane Wolf 10/25/2013  
 Robert Woolson 4/29/2014

**BAPTISMS**

Olivia Grace Alcalá 7/2/2013  
 Beatrice Sora Chung 2/16/2014  
 Maxwell Greable Mackey 11/17/2013  
 Jon William Olson 11/17/2013  
 Connor David Page 12/1/2013  
 Elizabeth David Page 12/1/2013  
 Jai Alfred Rajan 11/3/2013

**WEDDINGS**

Andrew Molloy/Caroline Khadder 12/14/2013  
 Richard Wille/Tara Van Schaack 11/23/2013  
 Andrew Shook/Katherine Van Cleave 10/12/2013  
 Vito Bucaro/Sarah Sprowl 9/14/2013  
 Brian Earl/Jennifer Gourley 8/31/2013  
 Tim Fields/Lydia Smart 7/27/2013  
 Charles Logan/Abigail Mitchell 7/27/2013  
 Thomas Lyman III/Suzanne Hilbrant 7/6/2013  
 Cory Eagerman/Julia Gougler 3/22/2014  
 Phillip Phair/Melanie Karzmyrski 6/27/2013  
 Dan Lasker/Katherine DeVries 7/13/2013

**BAPTISM/CONFESSION OF FAITH**

Chang Liu 11/24/2013

**TRANSFER OF MEMBERSHIP TO WCC**

Brad Page 11/24/2013

**AFFIRMATION OF FAITH**

Christopher Blum 11/24/2013  
 Anne Kelly 11/24/2013  
 Jennifer Page 11/24/2013



# Financial Report

## BUDGET SUMMARY

	2012 Actual (1)	2013 Actual (2)	2014 Budget
<b>Revenues</b>			
<b>Operating Revenues</b>			
Total Offering Income	\$1,016,106	\$1,044,717	\$1,014,000
Total Investment Inc Unrestricted	\$82,621	\$81,872	\$106,800
Total Other Income	\$20,892	\$47,691	\$19,500
Total Invest Funds-Specific Purpose	\$62,283	\$61,908	\$60,750
Total Program Income	\$55,777	\$54,947	\$58,300
Total Non-Invest Fund Transfers	\$0	\$10,686	\$0
<b>Total Operating Revenues</b>	<u>\$1,237,678</u>	<u>\$1,301,822</u>	<u>\$1,259,350</u>
<b>Expenses</b>			
Total WORSHIP	\$44,169	\$46,790	\$55,775
Total NURTURE	\$12,493	\$7,959	\$12,750
Total CHRISTIAN EDUCATION	\$24,558	\$24,744	\$25,100
Total OUTREACH	\$158,325	\$162,245	\$159,605
<b>SUPPORT</b>			
<b>GENERAL &amp; ADMINISTRATIVE</b>			
Total SUPPORT: Building & Grounds	\$114,149	\$129,266	\$129,500
Total SUPPORT: Annual Giving	\$273	\$1,429	\$0
Total SUPPORT: Office Expense	\$60,024	\$61,517	\$71,650
<b>Total GENERAL &amp; ADMINISTRATIVE</b>	<u>\$174,446</u>	<u>\$192,212</u>	<u>\$201,150</u>
<b>Total SALARIES &amp; RELATED</b>	\$792,789	\$799,048	\$761,241
Total Transition Expenses	\$0	\$0	\$115,000
<b>Total SUPPORT</b>	<u>\$967,235</u>	<u>\$991,260</u>	<u>\$1,077,391</u>
Total COUNCIL	\$7,121	\$31,430	\$7,500
<b>Total Expenses</b>	<u>\$1,213,902</u>	<u>\$1,264,429</u>	<u>\$1,338,121</u>
	<b>Net Total</b>		
	\$23,776	\$37,393	(\$78,771)
<b>Other Revenues/Expenses</b>			
Total Other Revenues	\$396,765	\$99,687	\$0
Total Other Expenses	\$721,817	\$648,015	\$456,964
	<b>Net Operating Total</b>		
	(\$301,276)	(\$510,936)	(\$535,735)

(1) 2012 accounts reconfigured to same format as 2013

(2) Unaudited

# BUDGET REVIEW AND ANALYSIS

Nicholas D. Schoewe

Treasurer

2013 turned into a solid year for WCC financially after a slow start. 2013 was budgeted to have a small operating surplus of \$12,000. However, at this time last year the pledge campaign had just closed \$40,000 below budget and it did not appear that a breakeven result would be attainable. But Phase 2 of our Vision 2020 strategic plan kicked off in September and the energy and excitement around that effort manifested itself financially with increased giving from our members. Donations from pledging members came in at \$959,000 exceeding the pledged amount by \$21,000. Giving from members who didn't pledge was also very strong finishing at \$70,000 - \$40,000 more than budgeted. Total Operating Revenue was \$1,302,000<sup>1</sup> versus a budget of \$1,292,000.

Expenses were also well managed. In the Support Group expenses were higher than budgeted for Building and Grounds, but this was more than offset by lower than budgeted expenses in Personnel and Office Expenses. Total Operating Expenses finished at \$1,264,000 or \$15,000 below budget leaving a Net Operating Surplus of \$37,000. It should be noted that in 2013 we did budget and receive an extraordinary gift of \$30,000 from a member family beyond regular pledging to aid a difficult budget year. This gift accounts for most of the 2013 surplus and has not been repeated in 2014.

WCC's Balance Sheet also strengthened in 2013 with further increases in our investment reserves. Cumulative Investment Reserve (CIR) assets increased from \$3.4 million to just under \$4.2 million. Including the allocation of \$140,000 from the 2012 operating surplus \$298,000 was deposited into the CIR. 2013 was also a positive year for investments and the CIR had \$643,000 in investment income and gains - a return of 18.3%. Over the course of the year \$149,000 was distributed from the CIR in support of WCC's operations. Of the \$4.2 million in the CIR \$1.85 million is dedicated to supporting specific purposes and \$2.35 million generates support for general or discretionary purposes. At the end of 2013 the CIR balance was approximately 3.2x the 2014 operating budget.

In 2014 long-time Senior Pastor Joseph Shank will retire and WCC will begin the transition to a new Senior Pastor. Costs associated with the transition are significant and absent corresponding cuts to other programs, made it impossible to budget a breakeven or better financial result for 2014. Considering the one-time nature of these expenses, the overall strength of the church's finances and the energy and momentum of our strategic plan, the Budget Committee determined to recommend a budget with an operating deficit of \$79,000. The congregation approved this budget at the budget meeting in February. The 2013 surplus will be used to help offset this deficit and Council will closely monitor actual results and take other

actions as circumstances warrant. To date the 2014 pledge campaign stands at \$962,000 or \$12,000 over the 2014 Budget giving further reason for cautious optimism that the budgeted operating deficit will stay within manageable bounds.

Looking further out, Budget Committees and Council will need to work through the implications of changes in how WCC operates as we move to implementation of our strategic plan while keeping in mind that leadership transitions often pose membership and financial challenges for churches. WCC has made a good start towards managing these challenges. There is evidence that we have increased the engagement of our core membership and are attracting some new members. This has produced solid financial results. However, the headwinds facing mainline protestant churches are also still evident as our total number of pledge units has continued to drop. As we move through the leadership transition and implementation of our strategic plan, stabilizing and then growing the number of pledge units is critical to maintaining the church's long-term financial health.

---

<sup>1</sup> Total Operating Revenue does include unbudgeted fund transfers of \$10,700. A transfer from the Program Services Fund was used to cover unbudgeted expenses of \$7,400 for the Vision 2020 enhanced worship and fellowship experiences in the fall. The Youth Mission Trip also had a small deficit of \$3,200 which was covered by drawing on the Youth Mission Fund.

## STATEMENT OF CONDITION 2012-2013

	12/31/2012	(1) Unaudited 12/31/13 (1)
<b>Assets</b>		
<b>Total Cash and Cash Equivalents</b>	\$534,973.39	\$373,059.67
<b>Total Accounts Receivable</b>	\$114,999.99	\$22,570.93
<b>Total Loans Receivable</b>	\$362,569.74	\$206,871.36
<b>Total Other Investments</b>	\$39,302.13	\$29,302.13
<b>Total CIR Investments</b>	\$3,401,718.90	\$4,178,399.77
<b>Total Investments</b>	\$3,441,021.03	\$4,207,701.90
<b>Total Prepaid Expenses</b>	\$26,112.94	\$12,448.02
<b>Total Property and Equipment</b>	\$6,998,779.42	\$6,563,331.49
<b>Total Assets</b>	\$11,478,456.51	\$11,385,983.37
<b>Liabilities, Fund Principal, &amp; Restricted Funds</b>		
<b>Liabilities</b>		
<b>Total Gift Annuities Payable</b>	\$29,302.12	\$29,302.12
<b>Total Accounts Payable &amp; Accrued Exp</b>	\$67,346.21	\$35,046.24
<b>Total Intransit Accounts</b>	(\$1,060.76)	(\$4,295.47)
<b>Total Liabilities</b>	\$95,587.57	\$60,052.89
<b>Fund Principal</b>		
<b>Unrestricted Funds</b>		
CIR Discretionary	\$1,351,238.59	\$1,622,201.01
General Fund	\$7,439,427.46	\$6,889,358.77
<b>Total Unrestricted Funds</b>	\$8,790,666.05	\$8,511,559.78
<b>Designated Funds</b>		
Special Offerings	\$0.00	(\$100.00)
Christmas Offerings	\$5,364.31	\$2,241.41
Church School Mission	\$786.49	(\$4,493.46)
Pastors' Discretionary	\$14,701.70	\$13,439.93
Program Service Fund	\$17,846.24	\$10,384.66
Seasonal Worship Flowers	\$0.00	(\$948.10)
CIR Churchyard	\$121,569.73	\$147,034.13
CIR Heritage Trust	\$16,961.43	\$105,595.83
<b>Total Designated Funds</b>	\$177,229.90	\$273,154.40
<b>Temporarily Restricted Funds</b>		
Prepaid Pledges & Deposits	\$476,799.37	\$424,475.44
Centennial Loan Fund	\$352,910.35	\$354,327.49
CIR Retirement Benefits Fund	\$342,405.44	\$389,984.82
<b>Total Temporarily Restricted Funds</b>	\$1,172,115.16	\$1,168,787.75
<b>Permanently Restricted Funds</b>		
CCT Charitable Gift Annuities	\$10,000.00	\$0.00
CIR Blatchford Endowment Fund	\$76,308.83	\$90,267.67
CIR D & R Jones Music Internsh	\$267,059.97	\$306,133.54
CIR Churchyard-Perm Restrict	\$30,000.00	\$30,000.00
CIR Christian Ed. Fund	\$340,407.98	\$385,494.18
CIR Mission Endowment	\$332,891.55	\$376,927.03
CIR Jadel Restricted Income Fu	\$156,454.86	\$226,845.68
CIR General Restricted Endowmn	\$339,009.28	\$477,918.80
<b>Total Permanently Restricted Funds</b>	\$1,552,132.47	\$1,893,586.90
Excess Cash Received	(\$309,274.64)	(\$521,158.35)
<b>Total Fund Principal and Excess Cash Received</b>	\$11,382,868.94	\$11,325,930.48
<b>Total Liabilities, Fund Principal, &amp; Restricted Funds</b>	\$11,478,456.51	\$11,385,983.37

WCC CUMULATIVE INVESTMENT RESERVES (CIR) REPORT: Fund Balances Income/Expense Allocations										December 2013	
Year To Date	Market Value @ 12/31/12	Share	Purchases	Exchanges	Sales/Fees	Capital Gain/Loss	Market Value 12/31/2013	Actual Inc/Exp	Closing Share		
<b>UNRESTRICTED:</b>											
<b>VANGUARD:</b>											
Prime Money Market	200,732.48	0.06	233,605.02	(136,000.00)	(100,000.00)	0.00	198,337.50	41.30	0.00		
LT Bond Index Fund	135,498.83	0.04	7,442.38	79,000.00	0.00	(24,136.90)	197,804.31	7,442.38	0.10		
LT Inflation Prot Bond Idx	170,331.20	0.05	3,390.96	41,000.00	0.00	(20,327.28)	194,394.88	3,390.96	0.04		
Int Term Bond Index Fund	169,927.01	0.05	6,925.14	34,000.00	0.00	(13,572.35)	197,279.80	6,925.14	0.09		
ST Bond Index Fund	338,475.70	0.10	5,367.78	56,000.00	0.00	(4,782.10)	395,061.38	5,367.99	0.07		
Growth Index Fund	512,011.67	0.15	8,005.33	(22,000.00)	0.00	156,691.16	654,708.16	8,005.33	0.10		
Mid-Cap Index Fund Inv	342,050.94	0.10	4,976.83	(30,000.00)	0.00	111,813.13	428,840.90	4,976.83	0.06		
Small Cap Growth Index	171,710.98	0.05	1,010.75	(22,000.00)	0.00	61,967.08	212,688.81	1,010.75	0.01		
Small Cap Value Index Fund	170,809.21	0.05	3,664.22	(14,000.00)	0.00	56,748.21	217,221.64	3,664.22	0.05		
Total International Stock	680,379.15	0.20	22,373.46	36,000.00	0.00	89,993.20	828,745.81	22,373.46	0.29		
Value Index Fund	509,791.73	0.15	14,479.14	(22,000.00)	0.00	151,045.71	653,316.58	14,479.14	0.19		
<b>TOTAL:</b>	<b>3,401,718.90</b>	<b>1.00</b>	<b>311,241.01</b>	<b>0.00</b>	<b>(100,000.00)</b>	<b>565,439.86</b>	<b>4,178,399.77</b>	<b>77,677.50</b>	<b>1.00</b>		
<b>PERMANENTLY RESTRICTED:</b>											
Churchyard	30,000.00	0.01		0.00	0.00	0.00	0.00	30,000.00	0.01		
Blatchford	76,308.83	0.02		0.00	0.00	1,669.46	12,289.37	90,267.67	0.02		
Christian Ed.	340,407.96	0.10		0.00	(15,900.00)	7,247.06	53,739.15	385,494.17	0.09		
D & R Jones Music Intern Fnd	267,059.97	0.08		0.00	(8,988.81)	5,720.20	42,342.18	306,133.54	0.07		
Mission Endowment	332,891.55	0.10		0.00	(15,600.00)	7,086.38	52,549.08	376,927.01	0.09		
Jadel Restr Income Fund	156,454.86	0.05	43,546.00	0.00	(7,200.00)	4,219.18	29,825.64	226,845.68	0.05		
Gen. Restricted Endmnt Fnd	339,009.28	0.10	50,017.84	25,000.00	(2,900.04)	8,103.77	58,688.07	477,918.82	0.11		
<b>TEMPORARILY RESTRICTED:</b>											
Pension	71,228.98	0.02		0.00	(2,685.00)	893.18	7,521.16	0.00	0.00		
New Pension Fund	283,387.23	0.08		0.00	(24,797.74)	6,570.53	47,866.49	389,984.82	0.09		
<b>UNRESTRICTED DESIGNATED:</b>											
Churchyard	121,569.73	0.04		5,000.00	(7,125.15)	3,316.04	24,273.52	147,034.13	0.04		
Heritage Trust	16,961.43	0.00	65,000.00	14,400.00	0.00	2,102.68	7,131.72	105,595.83	0.03		
Discretionary	1,351,238.59	0.40	75,000.00	0.00	(63,999.96)	30,748.92	229,213.47	1,622,201.02	0.39		
<b>SUBTOTAL:</b>	<b>3,386,518.42</b>	<b>1.00</b>	<b>233,563.84</b>	<b>44,400.00</b>	<b>(149,196.70)</b>	<b>77,677.38</b>	<b>565,439.86</b>	<b>4,158,402.69</b>	<b>1.00</b>		
Due to WCC	15,200.27	0.00	0.00		4,796.820	Trfr to Disc.		19,997.09	0.00		
<b>TOTAL:</b>	<b>3,401,718.69</b>	<b>1.00</b>	<b>233,563.84</b>		<b>(99,999.88)</b>	<b>77,677.38</b>	<b>565,439.86</b>	<b>4,178,399.79</b>	<b>1.00</b>		

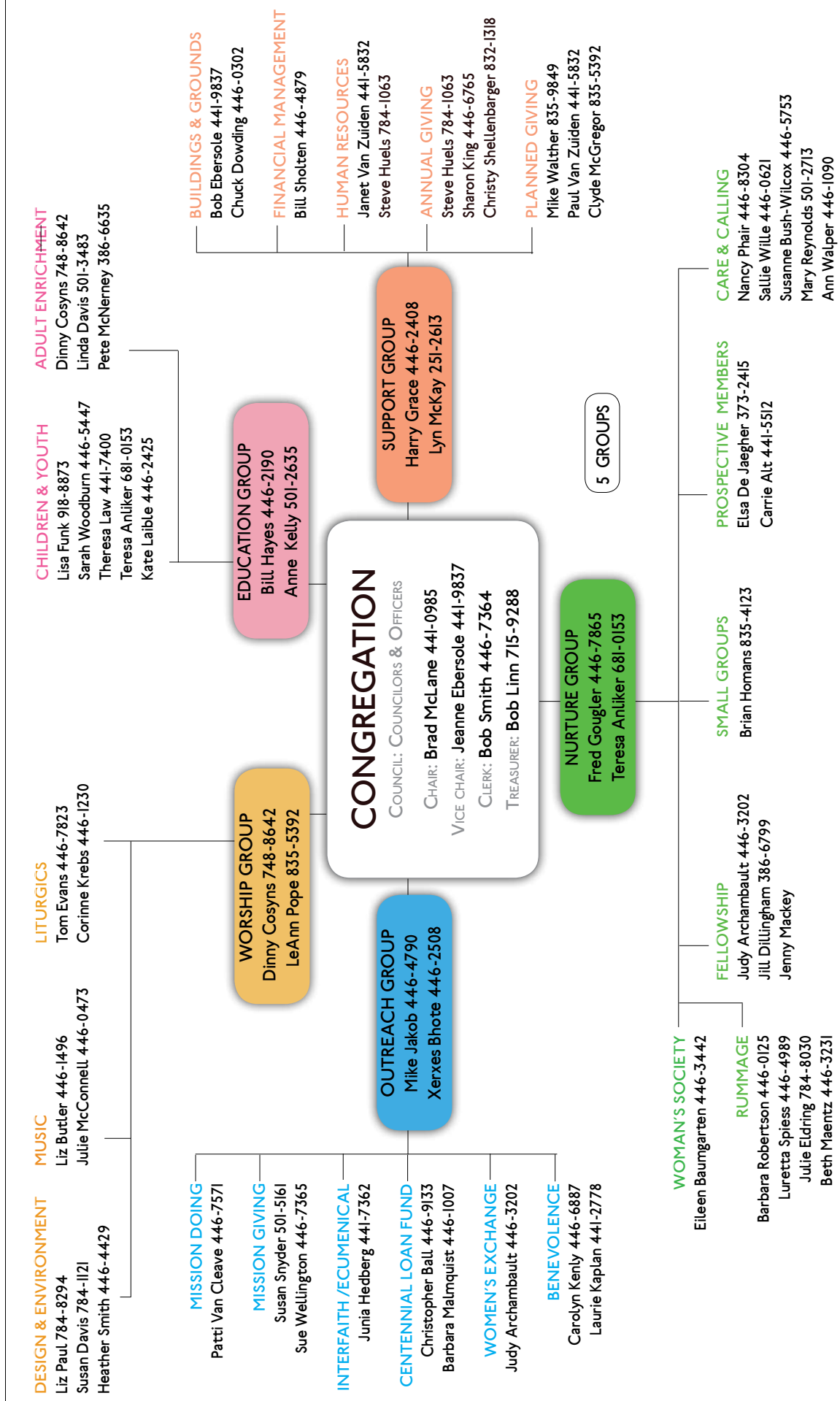
# 2014 Lay Ministry

*Date indicates Term Expiration*

CHAIR	Brad McLane <sup>2016</sup>
VICE	Jeanne Ebersole <sup>2016</sup>
CLERK	Bob Smith <sup>2015</sup>
TREASURER	Bob Linn <sup>2016</sup>
WORSHIP	Dinny Cosyns <sup>2016</sup> , LeAnn Pope <sup>2016</sup>
Liturgics	Tom Evans <sup>2016</sup> , Corrinne Krebs <sup>2016</sup>
Music	Julie McConnell <sup>2016</sup> , Liz Butler <sup>2016</sup>
Design	Liz Paul <sup>2015</sup> , Heather Smith <sup>2015</sup> , Susan Davis <sup>2015</sup>
EDUCATION	<b>X</b> , Bill Hayes <sup>2015</sup>
Children's Ministry	Lisa Funke <sup>2016</sup> , Theresa Law <sup>2016</sup> , Teresa Anliker <sup>2016</sup> , Kate Laible <sup>2016</sup> , Sarah Woodburn <sup>2016</sup>
Confirmants	<b>X</b>
Servants	<b>X</b>
Adult Enrichment	Dinny Cosyns <sup>2015</sup> , Linda Davis <sup>2016</sup> , Pete McNerney <sup>2016</sup>
OUTREACH	Mike Jakob <sup>2016</sup> , Xerxes Bhote <sup>2015</sup>
Mission Doing	<b>X, X</b>
Mission Giving	Susan Snyder <sup>2015</sup> , Sue Wellington <sup>2015</sup>
Interfaith	Junia Hedberg <sup>2016</sup> , <b>X</b>
NURTURE	Fred Gougler <sup>2016</sup> , Teresa Anliker <sup>2015</sup>
Small Groups	Brian Homens <sup>2015</sup> , <b>X, X</b>
Care & Calling	Sue Bush Wilcox <sup>2016</sup> , Nancy Phair <sup>2016</sup> , Sallie Willie <sup>2016</sup> , Mary Reynolds <sup>2016</sup> , Ann Walper <sup>2016</sup>
Fellowship	Jill Dillingham <sup>2015</sup> , Jenny Mackey <sup>2015</sup> , Judy Archambault <sup>2016</sup>
Prospective Mem	Elsa De Jaegher <sup>2016</sup> , <b>X, X</b>
SUPPORT	Harry Grace <sup>2015</sup> , Lyn McKay <sup>2015</sup>
Building & Grnds	<b>X, X</b>
Financial Mgt	<b>X</b> , Bill Sholten <sup>2015</sup>
HR	Janet von Zuiden <sup>2016</sup> , Steve Huels <sup>2016</sup>
Annual Giving	<b>X</b> , Steve Huels <sup>2015</sup>
Planned Giving	Mike Walther <sup>2015</sup> , Paul van Zuiden <sup>2015</sup> , Clyde McGregor <sup>2015</sup>

# The Lay Ministry of Winnetka Congregational Church

2014-2015



\* Covenant Group \*\* Coordinates with Outreach Group but reports to Woman's Society Board

Area code is 847 for all phone numbers, unless otherwise noted.

## NOTES

