

ANNUAL MEETING

MAY 1, 2016



WINNETKA
CONGREGATIONAL
CHURCH



Annual Report of the Chair

May 1, 2016

Table of Contents

Report of the Chair.....	1
Annual Meeting Minutes, May 31, 2015.....	2
An Update to the Bylaws.....	3
MINISTRY GROUP REPORTS	
WORSHIP GROUP	
Liturgics.....	4
Communion.....	4
Music.....	5
Design and Environment.....	5
NURTURE GROUP	
Care and Calling.....	6
New Members.....	7
Small Groups.....	7
Woman's Society.....	8
Fellowship.....	9
EDUCATION GROUP	
Children and Youth Education.....	10
Adult Enrichment.....	11
SUPPORT GROUP	
Buildings and Grounds.....	13
Financial Management.....	13
Personnel.....	13
Annual Giving.....	14
Planned Giving.....	14
OUTREACH GROUP	
Mission Doing.....	15
Interfaith/Ecumenical.....	16
Centennial Loan Fund.....	17
Mission Giving.....	18
CLERK'S REPORT.....	19
FINANCIAL REPORTS	
Budget Summary.....	21
Budget Review and Analysis.....	22
Statement of Condition.....	23
Cumulative Investment Reserves (CIR) Report.....	24
ORGANIZATIONAL CHARTS.....	Back cover

This year has been one of considerable transition and planning as we welcomed the Rev. Jeff Braun to help us build on our 2020 Vision to “Grow WCC through Faith”. What has been particularly remarkable over this past year has been the level of commitment and engagement shown by the congregation. Even in the midst of great change, it has been rewarding to see members (and prospective members) step up and into gaps to strengthen the fabric of the church during this transitional period.

2020 Vision: Two years ago, under the auspices of the Strategic Planning Steering Committee we collectively approved our 2020 Vision, Mission, and Strategic Plan. The first plank was Successful Pastoral Transition, the second was Growing Through Faith.

- Pastoral Transition: We did it! The SPSC over-delivered on a great outcome. Jeff made the proverbial leap of faith, joining us in September, and was formally installed on January 31, 2016. Our transition plan embraced this major change in three ways:
 - Support the Braun Family as they moved into and became a part of our community,
 - Support Jeff as he moved into his new role
 - Provide the Congregation the opportunity to engage in the process by communicating through Transition Minutes from the pulpit and the Called by God section on our website.
- Our key messages throughout were:
 - Embracing change and hope for the future
 - Call as a spiritual, God led process
 - We will grow in faith together
- Growing in Faith: We amplified activation of our plan through Jeff as he embraced our Called by God theme through the Fall culminating in an emotional laying on of hands at Jeff's installation in January. Probably most important, each of us can feel the changes in Worship and the spirit moving at WCC.
- More somberly, we collectively shared in the loss of some revered church members and remember their lives along with the contributions they have made to who we are today.

Council and Leadership: This group has been especially committed and resourceful during the year, taking responsibility for and actively engaging in moving WCC ahead. Many, many thanks for your time and efforts.

In closing, I want to express my gratitude to our generous pastors: the Rev. Jeff Braun, the Rev. Dr. William Mueller, and the Rev. Sarah Walker Cleaveland. Their guidance through this year of transition has been immeasurable. We are also grateful to Dr. Robert Harris and Elaine Clemens for the superb music that enhances our worship experience each and every week. And thank you to our wonderful staff: Floy Schrage, Ray Koch, Mark Dudek, Doug Coulter, Eileen Boyle and Waldek Ziolkowski who keep our church running smoothly and looking beautiful.

Thanks also to each of you for all the ways you have and continue to contribute to making WCC a “power in the service of God and Humanity”.

Brad L. McLane

Annual Meeting Minutes

May 31, 2015

The meeting was called to order by Chair Brad McLane at 10:45am. A quorum of 78 members being present the meeting proceeded to the reports.

Minutes of the 2014 Congregational Meeting – The minutes were approved as presented.

Treasurers Report – Treasurer Bob Linn presented a current status of the church's financial condition. Our current financial condition is strong. A detailed report is included in the 2015 annual report.

Centennial Loan Fund By Law Changes – (Jakob/Bhote) The congregation voted without objection to make the following changes to the by-laws:

- (a) Motion to amend the mission of the CLF to add: "To establish a companion Grant Fund (CLF Grant Fund) which will be used to provide grants to Chicago-area Christian Churches for the purpose of altering, repairing, improving and extending physical facilities of such churches."
- (b) Motion: To amend Article II (General Powers and Authority) to provide (g) a companion Grant Fund (CLF Grant Fund). The grants will be for Chicago-area Christian Churches as determined by the Committee, and consistent with the purposes of the CLF mission. The CLF Grant Fund is self-liquidating. The fund is limited to \$20,000 per year in grants over a maximum of five years with a sub-limit of \$5,000 per church over the life of the Grant Fund. The funds are to be granted on an annual time line similar to other WCC grant programs, with the ability to distribute emergency (ad hoc) funds on an as needed basis.

Senior Pastor Search Committee – Co-Chair Susan Gillette reported on the progress of the search committee to date. She commented on the value of the survey information submitted by the congregation in defining the job description of the next pastor. Co-Chair LeAnn Pope reviewed the processed used to conduct a national search and the role played by the consulting firm. There were 134 pastors in the initial pool of candidates screened by the search firm assisting the committee. The committee is in the final interview process of the top candidates.

Calling a new pastor – Jeanne Ebersole presented and explained the call process once a candidate is selected.

Nominating Committee Report – David Snyder moved to accept the recommendation of the committee. The motion was passed on a voice vote without objection. A list of the slate appears in the 2015 Annual Report.

The meeting was closed with prayer by Rev. Ben Bishop and adjourned at 11:35am.

Bob Smith,
Clerk of the Congregation

An Update to the Bylaws

Article VII (current)

Nomination and Election of Officers, Councilors and Ministry Group Leaders

1. Nominating Committee. Each year the Council shall cause the formation of a Nominating Committee. The Nominating Committee shall consist of nine (9) Active Members. Each Ministry Group shall select one (1) person to serve on the Nominating Committee. The balance of the Committee shall be appointed by the Council in good faith to represent the Congregation at large. Following the selection of the Committee, the Chair of the Congregation shall appoint the Chair of the Nominating Committee, subject to approval of the Council. The Nominating Committee shall be formed no later than February 7th of each year. The Nominating Committee shall nominate one (1) person for each elective office to be filled at the Annual Meeting of the Congregation.

Article VII (proposed revision)

Nomination and Election of Officers, Councilors and Ministry Group Leaders

1. Nominating Committee. No later than February 15th of each year, the Council shall cause the formation of a Nominating Committee, which shall consist of six (6) Active Members serving staggered two (2) year terms. Nominating Committee members shall be eligible to serve two (2) consecutive terms and may not serve again until a lapsed time of one (1) year. Following the selection of the Committee, the Chair of the Congregation shall appoint the Chair of the Nominating Committee, subject to approval of the Council. The Nominating Committee shall nominate one (1) person for each elective office to be filled at the Annual Meeting of the Congregation. The Senior Pastor will be an ex-officio member of the nominating committee.

Worship Group

LeAnn Pope and Dinny Cosyns

The Worship Group is comprised of the Liturgics, Music, Communion, and Design and Environment committees. Working together, it is the responsibility of these committees to foster an environment that provides the central and centering experience of joyful, enriching, and spiritually uplifting worship for all members and visitors of WCC. Pastor Braun has taken an active role in each area as you will read below.

We are blessed to have these dedicated and gifted committee members working with us in the Worship Group.

LITURGICS

Tom Evans and Sue Hartemayer

The Liturgics Committee is responsible for recruiting, organizing and training usher/host teams, greeters, acolytes, lay readers, and lay baptism participants. Additionally, the Liturgics team administers our Name Tag program which is intended to help us be a more nurturing, friendly congregation. These roles involve working with many members during the course of the program year.

There are eight usher/host teams, and about twenty-five greeters. Many will step up to serve on short notice when team members are missing. And, throughout the year our ushers/greeters volunteer to serve for special services and memorial services. The usher/greeter teams continue to work with Nurture/Membership to help identify first-time attendees and visitors. These visitors are identified to pastors and/or Membership teams in order to welcome and introduce them. Acolytes are recruited from 5th through 8th graders. Over 30 young people have served or are signed up to serve so far this year. Finally, the Usher/Greeter Handbook was updated this year and distributed to the various teams.

A group of forty-five people have volunteered to read scripture in Worship by arrangement, from time to time. There are seven people on call to serve as lay baptism participants as needed. We are pleased to report that a number of new people have volunteered to participate in these opportunities this year.

With Pastor Braun's encouragement, an effort has been made this year to include youth (primarily high schoolers) as greeters and ushers and as lay readers at least once a month. Thanks to Sarah Walker Cleaveland, we have been able to identify those young people who are interested in this service. This focus on featuring young people as Lay Readers will continue next year.

We are very grateful for these engaged members. We extend heartfelt thanks to all those who have contributed their time and talents, and encourage those of you still searching for a "niche" to contact one of us so we can "select your spot" together. Ushers, Greeters, Readers and Communion team members are great entry-points for new members. .

COMMUNION

Jo Anne Brown

Communion operates with three teams consisting of about three to four people, including Jo Anne Brown, who has been captain of communion for over twenty years. Team members serve four times a year (once every three months). This allows volunteers to serve in other areas as well, including Ushers/Greeters, Teachers, Readers, Fellowship, etc.

Communion is scheduled for the first Sunday of the month. Going back to our summer services, we have been serving communion by intinction. By this practice in the sanctuary, we walk up the center aisle to the front, we take a piece of bread, dip it in the cup of "wine," eat, and return to our pew via the outside aisle. Our pastors tell us that many newer members are more familiar with this practice than being served in our pews, passing silver plates of bread and trays of glass cups. For the near future we'll be using the intinction style of communion. Importantly, no matter what method we use, allergy-free/gluten-free wafers and individual cups for those who require it are offered.

We are working with The Floured Apron to provide bread from their classes from time to time. (The Floured Apron is a non-profit bakery that provides mentoring, food service and life skills training to disadvantaged women, empowering them to self-sufficiency and realize lasting success.)

Pastor Braun has been very involved and creative in directing the communion service on first Sundays and for special services. Together we will explore some additional pottery options for serving communion, saving the silver service and individual cups for special occasions.

We are always looking for volunteers. This year Paul Burkhardt retired after some 20-plus years of communion volunteering. We thank him for his service and invite any of you to join us.

MUSIC

Peter Cosyns and Liz Butler

The music committee orchestrates our many and varied musical offerings as a part of Worship and, on occasion, for the community.

Leadership of our music program is under the direction of Director of Music and Choral Master, Dr. Robert Harris, and Elaine Clemens, organist and Director of Children's Music.

The Chancel Choir, directed by Dr. Harris, sings in our worship services at least three out of the four services per month from September through June. The Choir's musical offerings comprise a diversity of musical styles and composers from the 16th century through the present day, thus providing our congregation with a variety of choral offerings. Due to the vocal excellence of the choir and the care taken by Dr. Harris to integrate each anthem's lyrics into the messages from the pulpit and from scripture, the choir is a major component in the church's overall worship experience.

The choir is comprised mainly of church members with additional support from eight semi-professional singers. The choir welcomes new members throughout the year. We are please to report that three church members joined the Chancel Choir this past year.

Under Ms. Clemens' guidance, the Cherub Choir (JK- 2nd grade) and Alleluia Singers (3rd – 5th grade) sing in service once per month. This past year marked the 100th Annual Christmas Pageant, a joyful WCC tradition featuring a cast of 100+ children and youth. Two musical ventures also under Ms. Clemens' guidance are the Bell Choir and the WCC Singers, both comprised of high school youth and adults. The WCC Singers is a contemporary singing ensemble which now has more than twenty members. Both perform during services on a monthly basis.

This year's Music Sunday during our regular morning worship will feature the Gospel Mass by Robert Ray. The committee will work to publicize this event to the broader community. At the suggestion of Dr. Harris, there is a strong likelihood that WCC will host a do-it-yourself Messiah the first or second Sunday in December. This would be open to the community. The Music committee will arrange for promotion of this event. Once details are finalized, we will communicate with the Worship Councilors.

This year WCC is fortunate to have two music interns. Leonard Cottrell serves under the Dorothy and Russell Jones Music Internship Program. Denielle Wilson serves as an intern to the musical programs under Ms. Clemens' guidance.

The blue robes, black robes, stoles, and white cassocks, which are no longer needed by any of our choirs, have been donated to the Evanston Seventh Day Adventist Church, Winnetka

Children's Theater, and the Winnetka Follies. Twenty hymnals were donated to The Mather Place. We still have an excess of hymnals because for the foreseeable future the hymns are printed in the Sunday worship program. If and when the committee learns of a group that needs hymnals, the committee will likely donate additional copies.

The music committee is in the process of redesigning its webpage. Maggie Meiners generously volunteered her time to photograph the Chancel Choir to place on the page. The written information on the webpage is being revised at this time. We anticipate having the webpage updated by the end of April.

Recently there have been problems with the Pasi organ malfunctioning due to humidity and old power source boxes. In mid-March the three Astron power source boxes, which were installed in 2007, were replaced. Ms. Clemens has been overseeing the organ maintenance and reports that the new power source boxes should resolve most of the problems. (Fluctuating humidity will remain an issue, however. Elaine and Ray will monitor these levels regularly.)

DESIGN & ENVIRONMENT

Jill Olson and Maggie Meiners

The D & E committee is responsible for the interior and exterior design elements that complement our worship experience. This includes the beautiful Easter banners, and new "Alleluia" mobiles designed with the help of Waldek, and hanging in the front of the sanctuary. Additionally, we supervise the urns out in front which continue to be planted by Edwards three times a year, fall, winter and spring. Two 52-inch preserved Boxwood topiaries have been ordered for the cut outs in the front entry way to the Narthex. They will be used throughout the year and enhanced with various seasonal elements as necessary.

This year, as new to Design & Environment, we have stayed true to past decor for Easter and Christmas. However, with Pastor Braun's vision, we have enhanced several other special events. New banners greeted us in September, designed by Waldek, and reinforcing the "Called by God" theme of the season. Remembrance Sunday included many candles and was very well received by the Congregation. Pastor Braun's vision continued to show up at Baptismal Sunday when a beautiful swag of aqua cloth representing water was hung by the altar as we all received a welcome into the church through Baptism. We had various breads for World Communion Day and a beautiful Thanksgiving altar as well. Ash Wednesday included terra cotta pots and votive candles again and was indeed, a special time at the church. We look forward to continuing to work with Pastor Braun to realize his vision for every Sunday in our beautiful sanctuary.

Nurture Group

Teresa Anliker and Fred Gougler

CARE & CALLING

Co-Chairs: Nancy Phair, Sally Wille, Alice Kepler, Sue Bush-Wilcox, Mary Reynolds and Ann Walper

Pastoral Leadership: Bill Mueller

· The Care and Calling Ministry focuses on providing support and comfort for our church family and friends during times of need.

· Care and Calling has a group of church members who visit nearly 32 homebound church members and can be called upon to prepare and deliver meals.

· Bill Mueller set up a website called “Take Them a Meal” which allows WCC members to sign up to take meals to those who are ill or in need.

· Two social events were planned. On April 23, 2015, CC hosted the annual Spring Luncheon for the committee of callers and church staff. Held in the Centennial Room, approximately 16 people attended. The speaker was Rev. Priscilla Wilkens Stevens, Director of Pastoral Care, Presbyterian Homes. This coming April 21, 2016 our committee will host a program, ‘Learning to Connect-Relating to the Person with Alzheimer’s’ presented by The Alzheimer’s association / Greater Chicago Chapter, Bill Mueller arranged both speakers.

· Care and Calling sponsored an Advent Prayer Vigil on December 9th and a Lenten Prayer Vigil on February 18th in the Little Chapel.

· Another social event CC plans is The Annual Poinsettia Party held December 1st, 2015 at Sally and Tom Wille’s home to celebrate the Christmas season, sign Christmas cards and take poinsettias to those members we call on. We changed the format this year to be an open house/cocktail party, Callers were invited. With this change it seemed to attract more callers.

· After the Easter service, we delivered the chancel flowers to homebound members.

· In May we will recognize our Long Term Church Members during the church service. Those who have been members for 40 years or more are honored.

· Care and Calling asks for the responsiveness of the entire congregation in making sure that C&C becomes aware of anyone who is suffering and would benefit from the support of our ministry.

NEW MEMBERS

Co-Chairs: Elsa De Jaegher and Carrie Alt

Team Members: Jane Dowding, Susan Brewster, Jill Olson, Will Herst

This church year, we continued to attract, welcome and engage new and prospective members to WCC. The arrival of Jeff Braun this fall as our Senior Pastor provided a welcome new level of stability to the church that we hadn’t had since Joe Shank’s departure. With Jeff now firmly in place, our committee was able to convert many long-time visitors to finally join WCC.

We worked together with Jeff to restructure the Prospective Members Orientation Class to focus more on developing a bond with their fellow classmates by sharing their personal faith journey stories and less on the structure and history of the church. We also restructured and updated the Prospective member folders which include 4 separate color-printed, two-sided pages (Pastoral Staff bios - including pictures, A Brief History of WCC, We Are... what kind of church we are and what programs we offer, and The Four P’s of membership (Presence in Worship, Participation, Pledging, Prayer). There is also 7 separate color-printed, two-sided pages about specific topics (Adult Enrichment, Children’s Ministry, Music Ministry, Outreach, Small Groups, Woman’s Society, and Youth Ministries). These membership folders are delivered to visitors that leave their address at the Visitor’s Sign-In Table in the Narthex. These same packets are also used during our orientation class. And finally, we also worked together with Jeff to change the New Member’s joining service to be more inclusive and warm.

We had 3 families join the church on October 25, 2015, and then another 4 families joined on November 8th and 5 families again on February 28, 2016. There will be one more orientation on April 17th and a joining this year on May 8th. To date, we have 4 families confirmed for the last orientation class and are waiting to hear back from another 4 families that are seriously considering attending/joining in this calendar year. Our committee was fully engaged preparing for these orientation classes and joining dates with multiple emails to each family to ensure attendance, arrange for childcare, provide lunch, participate in the orientation, writing bios, ordering cake, participating in the joining service and incorporate the new members into the life of WCC.

The process of bringing new members into WCC is complicated and is often very time-consuming. We start by asking both ushers and greeters to direct any one that they recognize as visitors to sign-in at the Sign-In table in the Narthex and to make a name tag for themselves. Contact is also often made

with visitors before, during and after the service and they are encouraged to join us for Fellowship in Tolman. If members have brought guests to church, we will contact them to obtain information about their friends. We have a team that goes and delivers the Prospective Member folders (discussed above) along with a bag of cookies. This personal touch also generates additional information if there is face-to-face contact. All the data including names, addresses, emails, phone numbers, and other pertinent information is maintained in one spreadsheet that is shared with the committee, clergy and council members every time it is updated. Starting in 2016, we have also requested that this list is distributed at council meetings in an effort to engage a broader segment of our congregation in the membership process. If council members know the visitors, we request that they reach out to them directly and invite them to return. Frequent visitors are also invited to join SLGs or other outreach/church programs as they occur.

We also request and receive support from the staff at WCC: Waldek provides marketing materials and distributes the e-Messenger, communicates upcoming orientation and joining dates, and make new name tags; Sarah shares much needed information about young families through her Sunday School database; Bill has welcomed many families into his Adult Education programs; Eileen provides support by updating and making our folders and by updating the WCC database with new member data; Floy helps us with scheduling, and taking pictures of the new families for the bulletin board and providing directories; and Jeff provides leadership during orientation and often times needs to have individual meetings with prospective members prior to their joining decision.

Orientation and joining dates are selected at the beginning of the year, and as we approach these dates we email or phone those visitors and invite them to attend the scheduled orientation class. Subsequent to the orientation class there is contact made by the committee to confirm a desire to join. Subsequent to joining, an effort is made to engage new members in at least one committee/small group. Collaboration also occurs with the Nominating Committee to ensure new members are included in open committee positions.

Our final new initiative has been to work together with our Nurture Councilors to broaden the definition of how WCC views new membership. We agreed that membership requires the support of a lot more people than just our committee and actually requires the efforts of the entire congregation in order to be successful to continue to grow as a church. In an effort to spread our message, we were invited to present to the Council our new membership process to and ask for their support to make membership a more church-wide effort and to develop a more welcoming culture.

SMALL GROUPS

The Small Groups Committee includes several standing groups as well as one-time small group gatherings:

Spiritual Life Groups – coordinators are:

Pastor Sarah Walker-Cleveland, Kris Kelly, Sarah Woodburn

In the fall of 2015, we reviewed lists of the existing 7 Spiritual Life Groups (SLG) and sent a survey to individuals asking for feedback on their SLG experience. We also developed an FAQ for new SLGs to use during formation. One area of feedback was a request for discussion topics for monthly SLG gatherings. During Lent, Pastor Sarah provided Lenten topics including a video of Sarah Miles giving ashes to people on the street on Ash Wednesday and The Book Thief discussion guide. SLGs and other small groups will review and provide feedback on the WCC 2020 Strategic Plan during the spring of 2016.

A primary goal for the Small Groups Committee is to form new SLG groups. We’ve solicited interest in new group membership through notices in The Messenger and the WCC New Member committee. We are in the process of contacting new members as well as existing members who have expressed interest. It appears that we have enough people for 1 or possibly 2 new groups. The plan is to kick off the new group(s) with an initial gathering in the Centennial Room with either Pastor Sarah or Pastor Jeff facilitating.

Spiritual Life Groups were started about 15 years ago and are small fellowship groups that meet monthly for dinner at a member’s home. Each person brings part of the meal and one of the group members typically leads a discussion. Some groups stick to a discussion format and some are primarily fellowship. Each group has between 12-20 members and most are consistent in meeting monthly. Others are more ad hoc. Over time, some members leave and new members are added. The groups are intergenerational and include individuals and couples. In some cases, only 1 half of a couple participates. Logistics coordination varies from group to group and typically starts with an email, someone volunteering to host, RSVPs and volunteers to bring food. Usually the host provides the main dish and selects a discussion topic.

Wine, Women & God –Fluery Linn, coordinator. Following is a description from Fluery: ... *It was started long ago by Pastor Jenny and she created the original list of names. She geared the group towards women who were empty nesters and who perhaps were not as involved at the church as when their children were home. The group has certainly changed, in one respect, many of the regular attendees are very involved at the church!*

To be honest, new people seem to become part of the group after hearing about it from a friend. They attend, try it out and if it appeals to them, they receive the monthly email. In the past, there have been notices in the Messenger about WW&G, but no one has contacted me that way.

As a group, we have tried to come up with a description of “who we are” and it was quite difficult. We are all empty nesters, some people still working, others not and my guess is that everyone is at least mid-50’s. So we have similar issues: aging parents, divorce, widowhood, illness of self or spouse or other family members, adult children, son and daughter-in-law’s, grandchildren, etc.

Currently, there are 36 names on our email list. In truth, we usually have between 5 and 15 women attend in any given month. We meet the 3rd Tuesday evening of the month from 6:30-8:30 pm in someone’s home. Each woman attending brings a beverage or appetizer. The 1st hour is socializing and eating! Then at 7:30 pm the group gathers in a circle for a check in and then there is a discussion led by someone in the group. The topic is decided by the woman who is the leader that evening.

The beauty of the group is the flexibility. Come when you can, no advance preparation or homework! I like to get an RSVP to give the hostess an idea of how many women to expect, but last minute attendees are most welcome! Our group definitely likes the cozy atmosphere of meeting in people’s homes.

The hard part from my perspective is finding discussion leaders. Often times, if I am attending, I figure something out and I have been the leader quite often. However, other women have been great leaders! It doesn’t take much more than a few starter questions or thoughts and the group begins to share their thoughts and ideas. The most important part of the group is the check in. It is a safe place where women can share what is happening in their lives and get applause, support, counsel, or just a hug! It is not a therapy group.

Saturday Night Supper – coordinator changes each month. The following description is from Elaine Clemens who hosted a St. Patrick themed Saturday Night Supper in March 2016 which was attended by Pastor Jeff and Lori Braun.: *Saturday Night Supper (SNS) has been a part of the church social activities for many years. SNS is open to anyone who would like to enjoy a wonderful meal and great company. The meal, presently costing \$18, each month is prepared by a creative chef. A different person serves as the host each month and provides appetizers and beverages. SNS meets the third Saturday of most months, September through May. Invitations to the “regulars” are emailed out each month, and an invitation to the congregation is included in the Messenger.*

First Friday – coordinators are Jane Dowding and Nancy Meislahn. There are 28 people on the email invite/distribution list. Following is a description from Jane: *Not everyone comes every month...we encourage people to come when it works for them, and not to feel guilty if they can’t make it. It’s a pot-luck with no food assignments...people bring something they want to take home if it doesn’t get eaten. No RSVPs...because it’s a pot-luck, the amount of food always sort of works out. Generally, I call people each month. One of the things I LOVE about First*

Friday is that you never know exactly who will walk through the door...those fun surprises are wonderful! People come when it works for them, and don’t worry about it if they can’t make it. Generally we have around 15 - 20 people. We start around 6:30, eat around 7:30 and are generally done around 9:00 - 9:30, so it’s not a late night, but a fun time for people to get out and share a meal together if they are so inclined.

Women’s Retreat – coordinators were Pastor Sarah Walker-Cleaveland, Kris Kelly, Heather Crimmins, Susan Snyder, Maggie Meiners. On Jan 22-23, 2016 we held a retreat at St Mary’s of the Lake in Mundelein, IL with about 30 attendees. Pastor Sarah took care of all the content writing and planning. The committee provided input and feedback on the schedule, coordinated with the St. Mary’s facility and assisted in gathering logistical information for the participants. We held worship, small group activities and allowed time for walking, meditating and a centering prayer yoga session. The St Mary’s facility is about an hour drive from Winnetka and has simple, but comfortable facilities and surrounds a beautiful lake.

One Church, One Book – *The Book Thief* by Marcus Zusak – coordinators were Pastor Sarah Walker-Cleaveland, Kris Kelly and Neva Egan. The idea was to hold small group discussions to complement the WCC hosted Marcus Zusak presentation on 3/12/16. Dinny Cosyns led the only discussion group on a Sunday after worship with a single attendee. Two other sessions were scheduled, however no one signed up, so the sessions were cancelled. The book was part of an all church Lenten study along with the Adult Enrichment movie discussion groups.

Men’s Group – coordinator is Pastor Bill Mueller. Although the Men’s group is a small group it is self-sufficient under Pastor Bill’s direction and gathers 3-4 times/year for a dinner/BBQ fellowship.

WOMAN’S SOCIETY

Eileen Baumgarten

The Woman’s Society has had it’s usual active year in providing fellowship and service to our members as well extending our care for the world through our benevolence activities. The executive board consisting of Eileen Baumgarten, Jane Trueheart Huels, Jane Knight Dampts, Betty Carbol, and Connie Casey have worked to keep the organization organized while our committee chairs do a lot of the hard labor.

Laurie Kaplan and Carolyn Kenley headed up their wonderful benevolence committee by meeting in the fall to vet the many applications from Chicago area nonprofits who then receive the funds that we receive from the proceeds of the rummage sale. We were honored this year by the North Shore Senior Center for our continued generosity for helping them provide for a caring community for older adults. A copy of the Benevolence Fund report is included with this report.

Barb Kearney and Loretta Spiess work to keep the “Circle” concept alive with monthly luncheons following the board meetings. Jane Dampts keeps the church community informed of all our programs through her great work as our communications chair as well as serving as our recording secretary. Ingrid Anderson Grace puts together our directory as well as being the chair of the scholarship committee which provides 1-2 college scholarships a year to senior’s who have shown exemplary service to the church during their high school years. Heidi Law oversees a committee that takes the floral arrangements provided for our services on Sunday and rearranges them in bouquets and then takes them to members in need of a little “pick-me-up” and a reminder that we are thinking of them.

We have a house committee headed by Fleury Linn and Peggy Redding that helps to keep our “house” in order. Fleury also works with co-chair Laurie Morse to organize the many wonderful memorial receptions that we offer to our members. Our library is now headed by Mary Alayne Schwartz who has a table of interesting reads to peak your interest in the Tyrell Library. The luncheon committee chaired by Kirsten Darnton and Barbara Robertson always decorates festive table settings and provides wonderful food for our luncheons from October to June. Peggy Redding and Leslie Ritter added the special social time we all enjoy before the luncheon starts. We can depend on Lois-Eve Anderson to have the perfect music selection for us to sing at these luncheons.

Our rummage committee of Julie Eldring, Beth Maentz, Teresa Anliker, Jane Trueheart Huels with the help of Barbara Robertson and Loretta Spiess work tirelessly year round to always organize and put on our fall rummage sale and the spring sale. It is truly a labor of love and commitment by these women, and we are so grateful to them.

We have maintained a part of our history by keeping vibrant the programs that go with our luncheons. Jane Trueheart Huels heads the program committee and provided us with great opportunities from learning about human trafficking to hearing about Connie Casey’s fascinating travels to Iran. Check out the last pages of your church directory for a full listing of all our board members as well as the schedule of programs.

Please join us in our final “celebration” by attending our Cocktail Celebration of our Year catered by Curt’s Cafe on June 1 from 5-7 p.m. in Tolman Hall.

Angles	\$4,750
Association House	\$4,850
Chicago Commons	\$5,250
Chicago Women’s Health Center	\$6,000
ChildServ	\$1,850
Concordia Place	\$4,300
Connections for Abused Women	\$7,800
Deborah’s Place Report	\$8,600

Erika’s Lighthouse	\$2,700
Family Service of Glencoe	\$1,000
Family Service of Winnetka-Northfield	\$2,900
Gad’s Hill Center	\$1,000
Good News Partners Report	\$8,400
Hillside Food Pantry	\$1,500
Holy Family Ministries*	\$4,550
Housing Opportunities & Maintenance for the Elderly (H.O.M.E.)	\$6,300
Housing Options for the Mentally Ill	\$7,200
Howard Area Community Center	\$8,500
Infant	\$4,050
Infant Welfare Society of Evanston	\$3,550
Juvenile Protective Association	\$6,800
La Casa Norte	\$5,850
Lawyers’ Committee for Better Housing	\$3,850
National Alliance on Mental Illness (NAMI)	\$3,100
New Foundation Center	\$6,300
New Trier Township Angel Fund	\$4,000
North Shore Senior Center	\$2,500
Onward Neighborhood House	\$6,000
Our Place	\$1,900
RefugeeOne	\$1,000
Salvation Army	\$10,000
Sarah’s Circle*	\$11,000
Sharing Connections	\$1,000
Shore Community Services	\$3,150
The Boulevard (formerly Interfaith House)	\$9,100
The Night Ministry	\$9,450
Tuesday’s Child	\$6,400
Union League Boys and Girls Club	\$3,350
WINGS Program, Inc.	\$2,500
YWCA Evanston/North Shore - Domestic Violence	\$10,000
ALLOCATION TOTAL	\$202,300
REVISED TOTAL FROM WCC ONLY	\$175,000

* Indicates a Matching program

FELLOWSHIP

Judy Archambault, Cristina Chung, Jen Mackey

On most Sundays following worship, fellowship is offered in Tolman Hall where one of six fellowship teams hosts coffee and treats and conversation with fellow parishioners. Over 40 people volunteer on one of the teams and help out on a rotating basis. In addition to regular Sunday fellowship, we have also hosted some special after worship events such as the Ice Cream Social on Kick-off Sunday in the fall, the church-wide Thanksgiving Potluck Dinner the Sunday before Thanksgiving and the all-church picnic in June. We also had the pleasure of planning the reception following the installation of our new Senior Pastor. Joining a Fellowship team is a wonderful way for both new and established members to get to know other members. Be sure to look at the back of your Bulletin each Sunday to see the Fellowship team listing – and come join us!

Education Group

Anne Kelly and Bill Hayes

The WCC Christian Education program aims to meet the spiritual development needs of a broad span of church members, from Pre-K through Adult Enrichment. On a continuing basis, WCC's educational program offerings benefit from ongoing review, reflection, and enactment according to emerging needs and interests of the congregation. This year, we've been blessed by Pastor Jeff Braun's energy and commitment to advance the faithfulness of members of all ages.

CHILDREN AND YOUTH EDUCATION

Sarah Woodburn, Theresa Law, Teresa Anliker, Kate Laible

The Children and Youth Committee serves as a planning and decision-making resource for Pre-K to grade 12 programming, with significant pastoral leadership from Sarah Walker Cleaveland. This committee of ten church members meets monthly and includes two members of WCC's Servants group to ensure student voice in decision-making. Lay members include Shelli Brown, Heather Crimmins, Elizabeth Dzierisk, Jennifer Earl, Anne Kelly, Kate Laible, Richard Santi, Heather Smith, Eliza Tilson, and Sarah Woodburn. In addition, Rick Oatman supported the Seekers and Servants programs as an interim Youth director from Sept. 2015 until March 2016 and a search to fill reconfigured position responsibilities is anticipated.

This year, the Committee enlisted the services of consultant Ministry Architects in October 2015 to survey select program participants and church stakeholders as well as evaluate support procedures to provide a snapshot of the current program and suggest improvements. As an initial response, the Committee embarked on a revision of WCC's Protection policy (2007) with assistance from the Pastors and Human Resources Committee. Specific highlights of the year according to age group follow:

Pre-K – 6th grade Sunday School continued to structure classes in 2-year groupings (Pre-K/K, 1/2, 3/4, 5/6) to deliver WCC- appropriate curriculum and balance attendance among an average of 35-40 students. The Church School program depends on the efforts of an expanding cadre of adult members of the church who volunteer to teach the Sunday classes on a rotating basis. This group includes both parents and other members of the church and they would welcome additional help. This year, we focused on increasing the number of adults involved in Church School, focusing specifically on those without children in the program. We had 33 different adults in the classrooms in 2015-2016 (16 of whom do not have Church School aged children) and 17 youth (grades 7-12). Pastor Walker Cleaveland continued to oversee the paid nursery staff as well as coordinate Church School, including purchasing new curriculum materials, organizing classroom set-up with C&Y committee members, and recruitment/communication with volunteer teachers and assistants. Shelli Brown's commitment

to serve as the lead teacher of the JK/SK class lent great continuity to the children and added tremendously to their initial experience with Church School.

Teachers had a mixed reaction to implementation of the new *Dwell* curriculum after eight years of continuity with materials developed by WCC volunteers and pastoral staff. The new curriculum provided more information and classroom tasks which could initially appear overwhelming, but became more well received as teachers' familiarity with *Dwell* units increased over time. The C&Y committee decided to proceed with Year 2 of the new curriculum and build on the training tips communicated by Pastor Sarah to better prepare teachers next Fall.

This year, the **5th and 6th grade** Seekers program moved to Sunday evenings when Confirmation was not taking place to simplify scheduling. For the first time, activities for this age group incorporated student leadership assistance from Servants Kara Struckman, Billy Crimmins, James Snyder, and Serena Braun. These Servants, along with Rick Oatman and lay leader Julie McConnell helped support faith and relationship building among those in attendance. Through March, attendance ranged from 12-15 children.

In addition to these regular programs, several special events involved children of the church. The Christmas Gift Fair, organized by Pastor Sarah, Shelli Brown, Ann Grote, Christy Shellenbarger, KC Simon, Heather Crimmins, and Susan Temple provided an opportunity for about 60 children to make gifts for their families. The historic occasion of the 100th annual Christmas pageant, led by Elaine Clemens, involved over 100 participants, aged JK through grade 12. On Sunday, June 5th, we will officially conclude the 2015-2016 educational program year with Youth Sunday. During this worship service, led by students and featuring the youth choirs, WCC will honor the service of our dedicated Church School teachers. In addition, the Women's Society will recognize the graduating class of high school seniors and announce the recipients of their annual scholarships.

Confirmation involved a single class of 21 eighth graders this year who studied Theology and Spiritual Disciplines over the year. Meeting on Sunday evenings continued to yield good attendance, with classes held on six Sunday nights in the fall

and another six Sunday nights in spring. In the fall, the class was divided into two groups taught by LeAnn Pope and Pastor Sarah with assistance from Bob Ebersole and Harry Grace. However, due to challenging class dynamics and ongoing discipline problems, the program was rethought and restructured in January. Pastors Jeff Braun and Sarah Walker Cleaveland led the teaching of the classes and welcomed the sustained involvement of LeAnn Pope, Harry Grace, Bob Ebersole, Jennifer Guy, and Jeff Smith as faith guides for this group. Program requirements continued to include participation in classes and retreats; worship attendance at both WCC and at alternative sites; as well as service hours at both WCC organized opportunities like Family Promise or other community projects of interest to confirmands and mentors.

Other activities related to preparation for Confirmation included confirmands' completing a faith interview with their mentor, attending alternative worship services, completing service both for the church and beyond the church, participating in an overnight retreat in Covenant Harbor, WI on April 8th-9th, writing a faith statement, and meeting individually with a pastor to talk about their faith statement in late April. Their preparation and mentor support will culminate with Confirmation during worship on Sunday, May 15th, after Council hears faith statements on May 10th. This year, the entire congregation will be invited to celebrate with our newest Church members and their families at the Confirmation brunch that follows worship.

Servants' participation level hovered around 10 students most weeks and was overseen, planned, and led by Rick Oatman, with assistance from Fitz Anderson as well as Katie and Andrew Shook. Servants met most Sundays from 4:00-5:30 pm and included discussion, fellowship, outings, and service opportunities. Once again Servants assisted Mission Doing in the congregation's annual Wish Tree event. The annual spring mission trip (the ninth and final trip) to the Dominican Republic attracted 15 students and 4 adult participants, including Pastor Walker Cleaveland, and church members Steve Huels, Jennifer Guy, and Carla Vorhees. These lay leaders arranged for travel logistics, building supplies, as well as prepared the trip budget in advance of the trip. In addition, many Servant parents and other volunteers stepped up and took over organization of critical elements like pre-trip procurement and packing of supplies (Heather Crimmins, Sarah Woodburn), solicitation and organization of the Servants Auction (Susan Snyder and Susan Temple), and planning the Fiesta del Sol feast (Carrie Alt, Annie Kay Taylor). Afterwards, trip participants planned and led Sunday worship, shared their experiences, and thanked the entire congregation for its generosity at the Fiesta del Sol celebration on April 24th. Self-funded through Servant-led fundraisers continuing until just before the trip, the trip remains a significant focus of WCC's volunteer mission doing and giving activities for this age group.

ADULT ENRICHMENT

Dinny Cosyns, Linda Davis, Bill Hayes, and Pete McNeerney
Rev. Dr. William A. Mueller, Pastoral Liaison

Adult Enrichment includes both weekly Sunday morning sessions as well as other seasonal and special and FOCUS (Focus On Community UnderStanding) programs and series. We endeavor to provide weekly Sunday morning programs, as well as to augment other ministries and populations in the church and community, and to learn from and work with each other to further God's realm on earth as it is in heaven.

Pastoral leadership for Adult Enrichment is provided by William Mueller, and he is joined by lay leadership that includes Dinny Cosyns, Linda Davis, Bill Hayes, and Pete McNeerney. Together they meet periodically to plan and support the various programs.

This past **2015-2016 program year**, Sunday mornings continued the popular format of typically beginning in the Centennial Room with Fellowship and Refreshments at 8:45, immediately followed by Program at 9:00 which typically includes both audiovisual and/or other presentations followed by conversation.

FALL QUARTER 2015:

- **Sunday mornings:**
 - **10-week DVD/Conversation series *Experiencing Jesus*** presented by Dr. Marcus Borg.
 - **3-week Advent series:**
 - This included 2-week presentation on DVD/Conversation on *A Thrill of Hope: The Christmas Story in Word and Art*.
 - One Sunday special program on seasonal music, presented by our **Peter Cosyns**
 - It is further noted that many of the above programs are facilitated by Adult Enrichment leaders, including our **Dinny Cosyns, Linda Davis, Pete McNeerney, Bill Hayes and Mel Schwartz**.
- **Weeknights:**
 - **Wednesday Movie Nights:**
 - *Still Alice* followed by discussion facilitated by our **Elizabeth Christopher**, representing the *Alzheimer's Association*. Such conversation on dementia to be furthered this spring, 2016 hosted by our **Care and Calling** ministry at its annual spring luncheon on Thursday, April 21, to which the congregation and wider community is invited.
 - *The Hundred Foot Journey* as an entertaining and

enlightening link between two FOCUS series listed immediately below.

- **3-week Monday Night FOCUS series** facilitated by **Dr. Thomas Mockaitis** on the topic of *The International Security Environment and the 2016 Election*, funded by the **WCC Robert Thomas Peace Fund**.
- **2-week Wednesday Night FOCUS series** facilitated by the **Rev. Dan McNerney** and **Imam Senad Agic** on the topic of *Christians and Muslims*.
- **FOCUS program** on *Climate Change* presented by our Education Councilor/Adult Enrichment Liaison, **Bill Hayes**, and **faith in place** as represented by the **Rev. Brian Sauder**. *This topic and ministry continues to generate much enthusiasm at WCC and the newly organizing Green Team!*
- **FOCUS program** presented by the **Community Renewal Society**.

WINTER QUARTER 2016:

- **Sunday mornings:**
 - **4-week DVD/Conversation series *How Jesus Became God***, presented by Dr. Bart Ehrman, based on his book by the same title. We are thankful to our **Dr. Andy and Junia Hedberg** for funding this presentation from *The Great Courses* which has created an appeal by attendees to continue with further lecture presentations and conversation on this topic in Spring 2016. Thanks also to **Mel Schwartz** for reviewing the entire series and making suggestions as well as facilitating conversation at our Sunday morning sessions.
 - **2-week DVD series *Three Faiths, One God: Judaism, Christianity, Islam***. This presentation inspired wider attendance and much enthusiasm for further review of the program and additional discussion. It also laid the groundwork for a special Monday evening program, in concert with the **Winnetka Interfaith Council (WIC)**, when a Muslim and neighbor, **Kamran Bajwa** spoke in our sanctuary to the wider community. It is noted that WCC is a member of the WIC through our Outreach group that oftentimes overlaps with Adult Enrichment in such outstanding presentations that inspire participation and co-leadership in other interfaith opportunities in the wider community.
 - **6-week Lenten DVD/Discussion series on *John: The Gospel of Light and Life***, presented by the Rev. Adam Hamilton, Senior Pastor of the fast-growing United Methodist Church of the Resurrection, Leawood, Kansas. Thanks to **Dinny Cosyns, Linda Davis, and Bill Hayes** for facilitating several sessions.

- **Saturday afternoon:**
 - *The Book Thief* was our “One Church One Book” Lenten gift this winter. Through WCC and Adult Enrichment’s ongoing relationship with The Book Stall, we have the opportunity to co-host authors like **Markus Zusak** who was in our sanctuary on Saturday afternoon March 12, on the 10th anniversary tour of this acclaimed book by all ages. Our thanks to various leaders who facilitated book discussion groups on this title during Lent.
- **Weeknights:**
 - **Wednesday Movie Night:**
 - *Selma*, in honor of Dr. Martin Luther King, Jr’s 87 birthday and the historic march in 1965. Discussion was facilitated by our **Dr. Robert Harris** that further inspired reading of Jim Wallis’ new book *America’s Original Sin: Racism, White Privilege, and the Bridge to a New America*.
 - **Lenten Wednesday Movie Night Series:** This year was a 2-week series on the theme of “Humble But Powerful Bridge-making Peacemakers”
 - *The Railway Man*, with discussion facilitated by the Rev. Jeff Braun
 - *Bridge of Spies*, with discussion facilitated by the Rev. William Mueller

SPRING QUARTER 2016:

- **Sunday mornings:**
 - **4-week DVD/Conversation series** “How Jesus Became God,” presented by Dr. Bart Ehrman, returns on all Sundays in April 3, 10, 17, 24.
 - **4-week series** “Spirituality and Health,” presented by an array of presenters on May 1, 8, 15, 22, including the **National Alliance on Mental Illness (NAMI)**, **Dr. Robert Magrisso**, our **Pete McNerney**, and **Dr. Susan Priebe**, Clinical Director of the **Samaritan Counseling Center**. We are grateful to our **Jane Dampts, Pete McNerney, Loretta Spiess, and Nancy Carstedt** for inspiring and expediting this opportunity, as well the **Rev. Kathy Dale McNair FaithNet** Coordinator for NAMI CCNS. It is noted that WCC provides space for **NAMI Balance for Success** bi-monthly group meetings for young adults regarding work and college challenges.
- **Weeknights:**
 - **Wednesday Movie Nights:**

- To compliment *The Book Thief* noted above, and by popular demand, we will present the movie on Wednesday evening, April 20, followed by further conversation.
- To observe Memorial Day, we will present and discuss the movie *Unbroken*, based on the acclaimed book, on Wednesday evening, May 18.
- **Wednesday evening FOCUS program**
 - We are privileged and proud to co-host with the Book Stall the debut of the newly released book *The Chicago Freedom Movement* on April 13 in our sanctuary. Our Pastor Emeritus, the **Rev. Dr. Paul S. Allen**, and others among us were and continue to be a part of the *Chicago Movement*.

Finally, as in definitively, Adult Enrichment continues to support and resource other ministries within and beyond our community of faith such as and the **Winnetka Interfaith Council** such as its continuing series on *Finding Inner Peace*. It was my pleasure and privilege to be on an interfaith panel on Tuesday evening, June 2, 2015; as our senior pastor will be the moderator of another such panel this Sunday afternoon, April 17. We also look forward to the annual Golder Lecture at Temple Jeremiah on Saturday evening, April 30 when we welcome **Eboo Patel**, founder and president of the **Interfaith Youth Core**.

Support Group

Harry Grace and Lyn McKay

BUILDINGS AND GROUNDS

Chuck Dowding and Bob Ebersole

Chuck and Bob worked with Design and Environment and Floy Schrage to get the lower level of the church re-carpeted last summer. Phase 2, the upper level, is still in the planning stage.

We are also working with a group of church and community leaders known as the Green Team. The goal of the team is to investigate ways to keep the pristine environment of our grounds while maintaining the most environmentally friendly practices.

The changes we made to the stone walls in the churchyard have proved to be the correct solution for the drainage problem that had existed for years.

FINANCIAL MANAGEMENT

David Woodburn, Mark Vorhees

The Financial Management Committee (FMC) continued the review and management of the Cumulative Investment Reserves (CIR) – essentially, WCC’s endowment fund – during 2015. Portfolio rebalancing was completed quarterly as stipulated in the Investment Policy Statement (IPS) adopted in 2006. Our meeting agenda material and the IPS are available for viewing via the Church Office. Through the continued use of Vanguard index funds, we have kept portfolio costs to less than 0.2%. 2015 performance was -0.85% with a target asset allocation of 70% stocks, 25% bonds and 5% cash.

PERSONNEL

Janet Van Zuiden, Steve Huels

This was a year of significant staffing change at WCC. The Rev. Ben Bishop, our Interim Senior Pastor, completed his time with us in August. We worked closely with the Senior Pastor Search Committee during the summer months to support their work, and in September we joyfully welcomed Jeff Braun as our new Senior Pastor. Working with the Executive Committee, we assisted with Jeff’s and Lori’s transition to Winnetka and provided support as he began his new role. Char Lillquist retired in June after 5 years with WCC; we hired Eileen Boyle as the new Assistant to the Pastors last summer. With the recent departure of Rick Oatman, Director of Youth, we are beginning the process of finding a replacement for this staff position.

We are grateful for the continued presence and leadership of Pastors Bill Mueller and Sarah Walker Cleaveland, and for the contributions of Dr. Robert Harris and Elaine Clemens who so beautifully lead our music programs. We are especially grateful for their many contributions during the transitional period.

We continue to work closely with Floy Schrage, Business/Facilities Manager, Doug Coulter, Accountant, and Waldek Ziolkowski, Publisher. Our thanks to all of them, and to Sextons Ray Koch and Mark Dudek, for keeping things running smoothly at WCC during this time of transition in leadership.

ANNUAL GIVING

Phil Brewster, David Snyder and Tom Temple

We had a strong 2016 pledge drive in the face of increased domestic and global economic uncertainties. To date, we have received 194 pledges totaling \$930,845 as of April 7, 2016. This is \$ 35,580 less than last year at this point. Presently, we are \$19,755 less than the 2016 budget amount for pledged contributions. The total number of pledges is down by 38 from last year, but we received 15 new pledges. We believe that we will meet the 2016-budgeted amount before summer through continued effort. Overall, 2016 pledging is a testament to the strength of the congregation.

This year's campaign benefitted by a motivating testimonial by David Snyder and Senior Pastor Braun's pledge leadership. We focused on tailoring pledging to the various giving levels and offered greater transparency into both the costs of operating the Church and congregational giving trends. We felt this provided greater context to pledging decisions. Most members responded quickly to the invitation to pledge. We sent personalized, handwritten Thank You cards to every pledging member/family, emphasizing the importance of pledges to WCC and expressing appreciation for support of the Church and its mission.

We continue to seek a balanced approach that keeps the congregation informed about the importance and mechanics of pledging and its importance to the health of our Church. Your feedback is always appreciated.

Summary of 2016 pledges to date:

1. 98 were the same in 2015
2. 23 have decreased from 2015
3. 56 have increased from 2015
4. 15 new pledges in 2016
5. 47 pledges from 2015 have stopped because of moves, deaths, etc. or have changed from Pledge to Current Support.

Summary of current pledge distributions:

Pledge Contribution	# Pledges	\$ Value	% of \$ Value	% of Pledges
\$10,000 or more	19	\$508,500	55	10
\$5,000 to \$9,999	24	\$145,840	16	12
\$3,000 to \$4,999	41	\$148,350	16	21
\$1,000 to 2,999	62	\$103,880	11	32

WCC is blessed by the generosity of a few members that provide over half of the pledged contributions. As a congregation, our long-term health will depend upon increasing contributions from more of the membership.

PLANNED GIVING

Clyde McGregor and Paul Van Zuiden

WCC has committed to a vision for the future that builds upon the great legacy of past and current generations. Planned Giving supports that vision financially through gifts from WCC members as provided in their wills, trusts and other estate planning documents. We help congregation members understand the importance of planned gifts and the planned giving options that are available. Congregation members who name WCC in their estate plans become members of the WCC Covenant Society. Our initial long-term goal is to build total investment reserves to four to five times core operating expenses, but as those core expenses grow, so too must our investment reserves. Beyond that financial security goal, incremental gifts will enable us to better serve - our own faith community and the broader community, which has long been WCC's legacy.

To heighten the awareness and importance of Planned Giving, our committee focuses on communication. We provide bi-annual information in *The Messenger*, make annual presentations from the pulpit, hold semi-annual Covenant Society luncheons (next one in June, 2016) and have one-on-one meetings with congregation members as they contemplate their estate planning. Over the past year, with the assistance of Waldek A. Ziolkowski, we upgraded the Planned Giving portion of WCC's website. Under the Giving heading, there is now a subhead for Planned Giving/Estate Planning. The site provides background, financial goals and instructions for becoming a Covenant Society member, including a link to the form used to provide the needed information to WCC.

If congregation members would like more information about WCC's Planned Giving Program, they should contact one of the Co-Chairs.

Outreach Group

Xerxes Bhote and Mike Jakob

MISSION GIVING

Chairs: Sue Wellington, Susan Snyder

Committee Members: Joanne Baker, Elsa De Jaegher, Ray Gillette, Bill Mueller (pastor), Bill Sholten, Patti Van Cleave, Anne West and Shari Felty, Kathryn Raysses (new member), Doug Crimmins (new member)

Mission: MGC funds programs that provide creative solutions in addressing basic human needs: education, food, job training, clothing, shelter, health, basic human rights. We focus on: Chicago metro area, small (<\$1mm in revenues). We work closely with our Mission Doing group to identify opportunities to fully engage with the agencies we contribute to.

In 2015 we gave 24 grants ranging from \$500 to \$10,000. Total amount given \$135,000. Funds are sourced from pledges and sharing of Chicago Charitable Trust Fund with Benevolence.

Applications for 2016 funding are due July 1st. Funds will be allocated in December 2016.

The agencies receiving funding in 2015 are as follows:

FOOD:

A Just Harvest

One of the few places in metropolitan Chicago where hungry persons can go any day of the year to receive a free, hot nutritious meal. A Just Harvest places no restrictions on the geographical location of its patrons or their level of income. This agency receives our largest grant, \$11,000.

Common Pantry

This agency is dedicated to providing emergency food and social services to our neighbors in need on Chicago's North Side while addressing the root causes of food insecurity and poverty.

Holy Sanctuary Community Church/Greater Rose Hill

Weekly Christian fellowship with many wrap around services in the North Lawndale neighborhood. Every Thursday provides weekly emergency food through is food distribution program.

Floured Apron (new agency)

WCC is pleased to provide the Floured Apron with weekly access to our kitchen so this agency can continue to perform its wonderful mission. The Floured Apron takes competent, capable, motivated women seeking to improve their life situation and spend 3-4 months training them in a food service environment. Pair them with local women from the community who've volunteered to be mentors.

Hope Community Outreach

A free weekly meal provides through volunteers at the Hope Community of Chicago provides nourishment to the needy and provides an opportunity for Christian fellowship.

Hunger Resource

Aid in the alleviation of hunger by helping meet the needs of food pantries, soup kitchens and shelters.

Meals at Home

This organization fosters health and contributes to individual well-being and independence by delivering nutritious meals, medically prescribed diets, and providing other supportive services to the homebound, elderly, disabled and others temporarily unable to care for their nutritional needs.

Star of David Ministries

House of David Outreach Ministry provides food, clothing and basic necessities for the poor, unemployed, underserved and homeless individuals in the West Division / Central Ave. neighborhood of Chicago.

Uptown Baptist Church

The goal of the church's Monday Fellowship Dinner is to feed the hungry and provide spiritual support. With the help of volunteers, the ministry provides a healthy meal to the needy each Monday night.

JOB TRAINING:

Career Resource Center

CRC is a re-employment resource that empowers and helps job seekers navigate the job search process.

Streetwise

Streetwise helps the homeless by providing an array of social services and by publishing a weekly magazine that is bought wholesale by its client vendors and resold at a profit. The model combines the opportunity for gainful self-employment with supportive services to assist the vendors on the road to financial self-sufficiency

JUSTICE:

CASA (Court Appointed Special Advocates)

CASA provides trained advocates for children who are wards of the state due to neglect and abuse. The advocates receive intensive training and are appointed by the court to represent the child.

EDUCATION:

Dorothy Stang High School

Dorothy Stang Popular Education Adult High School is the only bilingual high school completion program serving Latino adults, ages 25 or older, in the Midwest. Graduates of the program receive a state-certified high school diploma through Aspira Inc. of Illinois or Josephinum Prep School—both accredited Illinois high schools.

Lakeview Academy

Lakeview Academy is a small, diverse, private alternative high school which offers a high-quality state-recognized diploma program for students who have “fallen through the cracks” in other high schools.

Literature for All of Us

This organization’s goal is to engage adolescent girls and teenage mothers in book groups in order to help young women free their imaginations explore their strengths and build their self-esteem.

Sembrando El Futuro

Serving West Humboldt Park, Sembrando provides a safe place for children to come to do homework, get tutoring and have fun.

Third Unitarian Church

Serving the Austin neighborhood, the church offers \$500 scholarships to qualifying college-bound high-school seniors.

Madonna Mission

Provides education and resettlement support programs for refugee individuals and families. The agency is located in Rogers Park.

SHELTER/CLOTHING:

Evanston School Children

Evanston School Children’s Clothing Association (ESCCA) provides school clothing for all Evanston/Skokie District 65 K-8th grade school children in need. Each year we provide a full wardrobe of clothing and shoes to 500-600 children. Our clothing assistance services are performed efficiently and discreetly and always keep the dignity of the families in mind.

Family Promise

Family Promise Chicago North Shore provides families with young children who are homeless or at risk for becoming homeless, with a supported pathway to self-sufficiency. By providing both day and night time havens, nutritious meals, transportation, and social services to address issues that may have contributed to the situation, Family Promise gives parents a chance to focus on finding employment and provides guidance to create a plan to return to permanent housing. Winnetka Congregational Church three times a year houses families in this program at our church.

Housing Opportunity Development Corp.

HODC’s mission is to expand the stock of fair housing that is affordable to low- and moderate-income households throughout the northern suburbs. It purchases, develops and rehabs rental and owner-occupied affordable housing units on its own and through joint ventures with other housing developers.

Interfaith Housing Center/Open Communities

The Interfaith Housing Center advocates for fair and affordable housing. It serves individuals facing housing discrimination, foreclosure and other housing issues. It also provides education and advocacy for fair and affordable housing. We are a member congregation.

Sharing Connections

brings together community members by enabling families and businesses to share their gently used furniture and household items with families needing assistance. This is a unique opportunity for the community to directly make an impact by passing on something they no longer need to make a difference in the life of a family.

HEALTH:

Haven Youth and Family Services

Haven helps youth and families in crisis by offering 24-hour crisis intervention and emergency housing for adolescents, as well specialized programs on crisis prevention and intervention.

Fenix

Provides accessible low cost walk-in health care.

Samaritan Counseling Center

SCC provides a unique kind of psychotherapy that incorporates faith and spirituality in its counseling.

COMBINATION SERVICES:

Asian Youth Services

Provides after school tutoring and a safe haven for youth.

United Church of Rogers Park

The church provides an after-school program that provides a safe environment with activities and enrichment programs for children in the neighborhood.

New Life Baptist Church

New Life Baptist Church serves the homeless, needy, ex-offenders and troubled individuals.

INTERFAITH/ECUMENICAL

Committee Members: Junia Hedberg, Bob & Pat Hastings, Andrew Shook, and Carol Jansson

The Winnetka Interfaith Council (WIC) meets 5 times a year, on Monday evenings, in different faith communities, with committee meetings in between. Committees focus

on: Planning the Thanksgiving service; Planning interfaith dialogue events; Research and action on community needs; and Communication. Members exchange ideas and provide communication to and from their faith communities. WIC consists of reps from numerous faiths, including the Morton Grove Muslim community, faith communities in Northfield and Kenilworth as well as Winnetka and the Bahá’í Temple in Wilmette which is part of both the WIC and the Wilmette interfaith organization. This year WIC sponsored the Thanksgiving interfaith service at Holy Comforter Church, at which Rev. Jeff Braun participated, deliveries to the New Trier Food Pantry, and on April 17, *Finding Inner Peace: What Do The Sacred Texts Teach?*, moderated by the Rev. Jeff Braun. The WIC website is www.Winnetkainterfaith.org at which further information is available.

The Ministry of Space - Besides the Mission Giving and Mission Doing outreach of WCC, we often open our doors to community groups that just need a space to meet. When the Boy Scouts, Open Communities, Women’s Exchange, League of Women Voters or Samaritan Institute need a place to hold a meeting they contact Floy Schrage and a meeting space is arranged. Women of Note meets here Wednesday mornings Sept - Nov, and Feb - April. NAMI meets here twice a month on Tuesday evenings. AA holds a meeting here every Thursday. Most recently The Floured Apron, a new NFP providing job training and mentoring to disadvantaged women, has set up a training area in our under-used kitchen. The Floured Apron is gaining momentum and now has a presence in The Grand. Emily and her students even worked on a community service project with the students of Hubbard Woods School in Tolman Fellowship hall right before Holy Week.

WCC has long had the privilege of being the church with the open doors and hearts.

CENTENNIAL LOAN FUND

Chairs: John Tilson and Joe Romic

Committee Members: John Tilson, Jane Dowding, Joe Romic, Barbara Malmquist, Chris Ball, Cindy Pinkerton, Doug Struckman, Jonathan York, Leslie Sholton, Richard Laible

The Centennial Loan Fund was established in 1974, WCC’s centennial year, to create a perpetual and revolving loan fund to benefit Protestant churches in Chicago and suburbs. Loan applications and supporting financials from churches seeking funds for capital improvements to church property or to finance church-related programs necessary to the existence or growth of such churches are reviewed by CFL committee members

Mortgagee	Original Loan Date	Monthly Pmt	Loan Due Date	Current Balance
Peoples Church	March 2011	701.11	March 2016	Paid in Full
New Life Baptist Church	February 2012	701.11	January 2017	31,777.01
1 st Congregational Church – Downers Grove	July 2014	701.11	June 2019	27,108.22
1 st Progressive Church	March 2015	157.71	April 2020	7,706.67
Totals				66,591.90

followed by on-site inspections. Approved loans are typically made for a five year time period at low interest rates, secured by a lien on the property. As of February 29, 2016, the Fund has five loans outstanding in the table at the end of this report.

In addition to the above outstanding, the committee is reviewing applications from several churches including requests for \$40,000 loans, each from People’s Church of Chicago and the Philippian American Ecumenical Church.

The major initiative completed by the CLF committee and the Board of WCC this year was the creation of a new pool of funds that will be distributed as grants to assist a larger pool of churches. Specifically, the Centennial Loan Fund Committee allocated \$100,000 from the Centennial Loan Fund on May 18, 2015 to a companion Grant Fund (“CLF Grant Fund”). The Grants will be for Chicago-area Christian Churches, consistent with the precepts of the Loan Fund. The CLF Grant Fund is self-liquidating. The fund is limited to \$20,000 per year in grants over a maximum of five years with a sub-limit of \$5,000 per church over the life of the Grant Fund. The funds are to be granted on an annual timeline similar to other WCC grant programs, with the ability to distribute emergency (ad hoc) funds on an as needed basis.

The CLF Grant Fund will follow the following process: The CLF committee will solicit applications starting in March, deadline to submit in June, review applications July to October, make decisions in November, and distribute funds in December. Coordination with Mission Giving and Benevolence groups will occur throughout the process, specifically including after grant applications have been received so that WCC has one outward face to all potential recipients.

CLF Grant Fund (“CLFGF”) The CLF Grant Committee is pleased to report robust grant activity even during a shortened year for grant giving since the Fund was approved in May 2015. Due to the valiant and well-coordinated efforts of members of its sister grant-giving committees of WCC, Mission Giving and Benevolence, the CLFGF was able to disburse \$22,300.00 in 201 to the following churches. While this total is above budget, the CLFGF bylaws allow for ad hoc/emergency disbursements above \$20,000.00 per year.

Hope Community Church - \$5,000
Uptown Baptist Church - \$5,000
Third Unitarian Church - \$5,000
Star of David - \$2,300
New Life Baptist Church \$5,000.00

We expect to continue with our goal of disbursing \$20,000 per year to Chicago-area churches at year end 2016.

MISSION DOING

Laurie Morse and Patti Van Cleave, co-chairs

ONGOING:

A Just Harvest – Monthly serving. Ebersoles still providing food; need 4 volunteers a month. Laurie Morse is still coordinating volunteers. We are searching for a member of our Congregation who can serve on the Board of this Organization. They are our largest mission (in terms of time and treasure), and they need our executive assistance.

Family Promise – Jennifer Earl, Meg Hayes and Susan Temple are coordinating at WCC. We will host FP three times this year.

A Concerted Ministry – Soliciting for donations for the NTT Food Pantry on the first Sunday of each month. Messenger blurb inserted by Bill. We provide donated canned goods, paper goods as well as fresh fruit and vegetables. We are working with Bill Mueller to plan another Dairy Drive for St. Sabina in 2016.

Jesus Has Left the Sanctuary – Was held on November 15. Full report was provided to Council. We recommend continuing this done-in-a-day project on an annual basis. We took a new approach in 2015, which allowed us to build community by having all ages working to pack food for Kids Against Hunger in Alsdorf Auditorium, rather than doing a variety of separate projects. Congregation was enthusiastic about this event.

A Just Harvest Wish Tree – Gifts and treats were taken down to church by Servants and other church members on December 21st. This was the largest Wish Tree project to date, with more than 330 gifts collected and delivered.

WCC Sustainability Team - This “green” team was organized in late 2015. The group is identifying projects and opportunities for education and discussion about sustainable practices within our congregation and in the larger community of Winnetka.

NOTES FOR THE FUTURE AND ONGOING CONVERSATIONS:

-We would like to do more in the larger Chicago region, and believe identifying partnerships with a church or churches in needy communities is a good way to extend this “Doing” ministry. With the help of clergy we are exploring these options.

-We would like to “Do” more with our “Giving” recipients. See note above.

-We have not been successful identifying international opportunities for the full congregation (all ages). We would like to know if having these opportunities (beyond a youth spring break trip) is important to the Congregation.

-Our Wish Tree event is the right match for doing within our congregation during the holidays. However, we’re wondering if our recipient partner already benefits from other, similar collections, and if we should move the Wish Tree benefits to another partner in a more underserved community.

Other:

While Mission Doing has nothing to do with Emily’s project, the Floured Apron, we commend WCC’s support of this job training program within our church home, and see it as a scalable “doing” mission of our church. We mention it here so there is a record of the project in Council notes for this Annual Report.

Clerk’s Report

MEMBERSHIP SUMMARY

Information correct as of April 21, 2016

	2011-2012	2012-2013	2013-2014	2014-2015	2015-2016
	851	863	873	858	858
ADDITIONS:					
Confirmands	16	18	0	27	0
Baptism/Confession of Faith			1	0	0
Reactivation	0	0	1	0	0
Reaffirmation of Faith	20	2	3	4	3
Transfer of Membership	8	9	1	10	18
Total Additions:	44	29	6	41	21
RELEASES:					
Transfer to Associate	0	0	0	1	4
Transfer to Friend	1	0	0	0	0
Letter of Transfer	7	2	0	0	0
Letter of Inactive	1	0	8	27	89
Withdrawals		0	0	0	0
Deaths	23	17	13	13	10
Total Releases:	32	19	21	41	103
Net Change:	+12	+10	-15	0	-82
Active Membership (year end):	863	873	858	858	776
PERSONAL SERVICES:					
Baptisms	8	5	7	9	3
Weddings/Vows renewals	9	5	11	6	2
Memorials/Interments	33	29	35	38	20
Total Personal Serv:	36	50	39	53	25

Financial Report

BUDGET SUMMARY

BAPTISMS:	3	TRANSFER OF MEMBERSHIP:	18
Samantha Schwartz	7/21/2015	Lori Braun	10/25/2015
Augusta Anderson	1/24/2016	Serena Braun	10/25/2015
Elle Marie Hartemayer	4/17/2016	Walter Grote	10/25/2015
		Ann Grote	10/25/2015
WEDDINGS:	2	Maggie Grote	10/25/2015
Richard Schwartz / Karen Wojcik	9/20/2015	Ashley Ryan	10/25/2015
Suzanne Guy / Jeffrey Fain	8/28/2015	Wes Meuller	11/8/2015
		Courtney Meuller	11/8/2015
		Jim Hansen	11/8/2015
DECEASED MEMBERS:	10	Carol Hansen	11/8/2015
Robert Sherman Jr.	06/09/2015	Rick Schwartz	11/8/2015
Eliot Spiess	06/17/2015	Karen Schwartz	11/8/2015
James Johnson	08/21/2015	Steve Juliusson	11/8/2015
Katherine Kingery	09/04/2015	Linda Maclachlan	2/28/2016
Comer Plummer	09/12/2015	David Maclachlan	2/28/2016
Willard McNitt Jr.	10/04/2015	Deborah Herst	2/28/2016
John Montgomery III	11/10/2015	William Herst	2/28/2016
Audrey Ewing	12/26/2015	Elizabeth Christopher	2/28/2016
Frank Ginn	02/09/2016		
Suzie Guyot	02/29/2016		
		AFFIRMATION OF FAITH:	3
MEMORIAL SERVICES:	12	Zachary Ryan	10/25/2015
Rex Martin Balz	6/30/2015	Ellen Greene	2/28/2016
Eliot Spiess	7/25/2015	David Mulvaney	2/28/2016
Maryanna Allabough	8/8/2015		
James Johnson	8/29/2015		
Katherine Kingery	9/18/2015		
Comer Plummer	10/30/2015		
John Montgomery III	11/28/2015		
Leland George Rodgers	11/30/2015		
Daniel Crowe Sr.	12/14/2015		
Lanny Patrick Sack	1/9/2016		
Frank Ginn	3/5/2016		
Suzie Guyot	3/5/2016		
INTERMENTS:	8		
Marian Ware	7/14/2015		
Eliot Spiess	7/25/2015		
Katherine Kingery	9/18/2015		
Rosanna Welsh Ewart	9/19/2015		
John Ellis	9/26/2015		
Willard Levings	10/3/2015		
John Montgomery III	11/28/2015		
Audrey Ewing	4/8/2016		

	2014 Actual Audited	2015 Actual - Unaudited	2016 Annual Budget
Revenues			
Operating Revenues			
Total Offering Income	\$1,029,168	\$978,276	\$999,000
Total Investment Inc Unrestricted	\$99,800	\$119,824	\$120,553
Total Other Income	\$6,937	\$6,481	\$7,500
Total Invest Funds-Specific Purpose	\$53,832	\$53,538	\$69,703
Total Program Income	\$70,545	\$73,316	\$74,500
Total Operating Revenues	<u>\$1,260,282</u>	<u>\$1,231,435</u>	<u>\$1,271,256</u>
Expenses			
Total WORSHIP	\$63,952	\$50,541	\$56,496
Total NURTURE	\$7,324	\$17,513	\$23,900
Total CHRISTIAN EDUCATION	\$18,165	\$18,183	\$33,000
Total OUTREACH	\$178,963	\$168,708	\$163,076
SUPPORT			
GENERAL & ADMINISTRATIVE			
Total SUPPORT: Office Expense	\$62,660	\$74,239	\$65,252
Total SUPPORT: Building & Grounds	\$122,244	\$117,359	\$143,440
Total SUPPORT: Annual giving	\$1,048	\$274	\$600
Total SUPPORT: Transition Expenses	\$33,792	\$70,035	\$0
Total GENERAL & ADMINISTRATIVE	<u>\$219,744</u>	<u>\$261,906</u>	<u>\$209,292</u>
SALARIES & RELATED			
Total SALARIES & RELATED	\$743,053	\$705,039	\$846,080
Total SUPPORT	<u>\$962,798</u>	<u>\$966,945</u>	<u>\$1,055,372</u>
COUNCIL			
Total COUNCIL	\$8,004	\$6,785	\$7,849
Total Expenses	<u>\$1,239,206</u>	<u>\$1,228,674</u>	<u>\$1,339,693</u>
	Net Total	\$21,077	\$2,760
			(\$68,437)
Other Revenues/Expenses			
Total Other Revenues	\$18,868	\$1,565	\$0
Total Other Expenses	\$479,768	\$419,449	\$345,563
	Net Operating Total	(\$439,824)	(\$415,123)
			(\$414,000)

2015 BUDGET REVIEW AND ANALYSIS

Bob Linn

2015 ended up having a small operating surplus of almost \$3,000 compared to a budgeted loss of \$77,000. Although income was under budget, expenses were less than budgeted primarily because of open positions and capital improvements included in fixed assets not expense.

The Balance Sheet remained strong in 2015. Cumulative Investment Reserve (CIR) assets decreased modestly from \$4.3 million to \$4.2 million. The CIR had \$111,000 in investment losses and \$74,000 in income for a negative return of .848%. During the year, \$212,000 was distributed from the CIR in support of WCC's operations. Of the \$4.2 million in investments, 54% are restricted as to their use and 46% are not restricted.

The 2016 budget is very close to the 2015 budget. An operating loss of \$68,000 is budgeted for 2016. Expenses total \$1,340,000 and offering income covers only 75% of the expenses. Investment income and other income provide the remainder. The 2016 budget was previously approved by the Congregation. The 2016 pledge campaign needs about \$20,000 in pledges to reach the \$950,000 goal.

STATEMENT OF CONDITION 2014-2015

	12/31/2014 Audited	12/31/2015 Unaudited
Assets		
Total Cash and Cash Equivalents	\$450,832	\$360,070
Total Accounts Receivable	\$25,517	\$0
Total Loans Receivable	\$68,821	\$70,207
Total CIR Investments	\$4,322,591	\$4,225,705
Total Prepaid Expenses	\$3,022	\$24,721
Total Property and Equipment	\$6,130,742	\$5,735,537
Total Assets	\$11,001,524	\$10,416,239
Liabilities, Fund Principal, & Restricted Funds		
Liabilities		
Total Gift Annuities Payable	\$4,138	\$0
Total Accounts Payable & Accrued Exp	\$17,972	\$32,196
Total Intransit Accounts	\$2,963	(\$884)
Total Liabilities	\$25,073	\$31,312
Fund Principal		
Unrestricted Funds		
00000.400.00 - General Fund	\$6,372,745	\$5,887,473
00000.405.00 - CIR Discretionary	\$1,649,104	\$1,551,973
Total Unrestricted Funds	\$8,021,849	\$7,439,446
Designated Funds		
00000.412.00 - Church School Mission	\$1,248	\$1,513
00000.413.00 - Pastors' Discretionary	\$12,055	\$0
00000.414.00 - Program Service Fund	\$10,385	\$10,385
00000.415.00 - Seasonal Worship Flowers	\$0	\$912
00000.416.00 - CIR Churchyard	\$155,743	\$154,589
00000.417.00 - CIR Heritage Trust	\$126,713	\$128,625
00000.422.00 - Music Fund	\$0	\$3,155
Total Designated Funds	\$306,144	\$299,179
Temporarily Restricted Funds		
00000.430.00 - Youth Mission Fund	\$21,401	\$12,916
00000.431.00 - Concert Fund	\$5,028	\$5,028
00000.432.00 - Prepaid Pledges	\$374,678	\$400,712
00000.433.00 - Mission Outreach Fund	\$441	\$441
00000.434.00 - Centennial Loan Fund	\$355,398	\$351,673
00000.435.00 - Robert Thomas Fund (Peace)	\$7,118	\$6,318
00000.436.00 - CIR Retirement Benefits Fund	\$401,302	\$382,695
Total Temporarily Restricted Funds	\$1,165,366	\$1,159,783
Permanently Restricted Funds		
00000.450.00 - CIR Blatchford Endowment Fund	\$92,201	\$91,390
00000.451.00 - CIR D & R Jones Music Internship	\$321,332	\$316,594
00000.452.00 - CIR Churchyard-Perm Restrict	\$30,000	\$30,000
00000.453.00 - CIR Christian Ed. Fund	\$391,984	\$369,119
00000.454.00 - CIR Mission Endowment	\$385,297	\$364,072
00000.455.00 - CIR Jadel Restricted Income Fund	\$223,386	\$200,571
00000.456.00 - CIR General Restricted Endowmnt Fnd	\$544,166	\$529,897
Total Permanently Restricted Funds	\$1,988,366	\$1,901,643
Excess Cash Received	(\$505,272)	(\$415,123)
Total Fund Principal and Excess Cash Received	\$10,976,452	\$10,384,927
Total Liabilities, Fund Principal, & Restricted Funds	\$11,001,524	\$10,416,239

2016-2017 Lay Ministry

Dates indicate: Term Expiration; (Term Number); Maximum Term
Persons in bold are new to the position.

EXECUTIVE

Chair
Vice
Clerk
Treasurer

Jeanne Ebersole^{2018(Max)}
Fred Gougler^{2018(Max)}
Christy Shellenbarger²⁰¹⁷⁽¹⁾²⁰²¹
Bob Linn²⁰¹⁸⁽²⁾²⁰²⁰

WORSHIP GROUP

Councilors
Liturgy
Music
Design

Dinny Cosyns²⁰¹⁸⁽³⁾²⁰¹⁸, LeAnn Pope²⁰¹⁸⁽³⁾²⁰¹⁸
Tom Evans²⁰¹⁸⁽²⁾²⁰²⁰, Sue Hartemayer²⁰¹⁷⁽¹⁾²⁰²¹, **Jo Anne Brown**²⁰¹⁷⁽¹⁾²⁰²¹
Liz Butler²⁰¹⁸⁽²⁾²⁰²⁰, Peter Cosyns²⁰¹⁸⁽²⁾²⁰²⁰
Maggie Meiners²⁰¹⁷⁽¹⁾²⁰²¹, Jill Olson²⁰¹⁷⁽¹⁾²⁰²¹

NURTURE GROUP

Councilors
Small Groups
Care and Calling

Teresa Anliker²⁰¹⁷⁽²⁾²⁰¹⁹, **Elsa De Jaegher**²⁰¹⁸⁽¹⁾²⁰²²
Kris Kelly²⁰¹⁷⁽¹⁾²⁰²¹
Sue Bush-Wilcox^{2017(Max)}, Nancy Phair^{2017(Max)}, Mary Reynolds^{2017(Max)}
Ann Walper²⁰¹⁸⁽²⁾²⁰²⁰, Sally Wille^{2017(Max)}, Alice Kepler²⁰¹⁸⁽²⁾²⁰²⁰
Judy Archambault²⁰¹⁸⁽²⁾²⁰²⁰, Cristina Chung²⁰¹⁷⁽¹⁾²⁰²¹, Jenny Mackey^{2017(3)2019(Max)}
Carrie Alt²⁰¹⁸⁽²⁾²⁰²⁰, **Brad McLane**²⁰¹⁸⁽¹⁾²⁰²²

EDUCATION GROUP

Councilors
Children and Youth

Bill Hayes²⁰¹⁷⁽²⁾²⁰¹⁹, Anne Kelly²⁰¹⁸⁽²⁾²⁰²⁰
Shelli Brown²⁰¹⁷⁽¹⁾²⁰²¹, Elizabeth Dzierzk²⁰¹⁷⁽¹⁾²⁰²¹, Kate Laible²⁰¹⁷⁽²⁾²⁰¹⁹
Heather Smith²⁰¹⁸⁽¹⁾²⁰²², **Heather Crimmins**²⁰¹⁸⁽¹⁾²⁰²², **Eliza Tilson**²⁰¹⁷⁽¹⁾²⁰²¹
Richard Santi²⁰¹⁷⁽¹⁾²⁰²¹
Dinny Cosyns^{2018(Max)}, Linda Davis^{2018(Max)}, Pete McNerney²⁰¹⁷⁽²⁾²⁰¹⁹

SUPPORT GROUP

Councilors
Building and Grounds
Financial Management
Human Resources
Annual Giving
Planned Giving

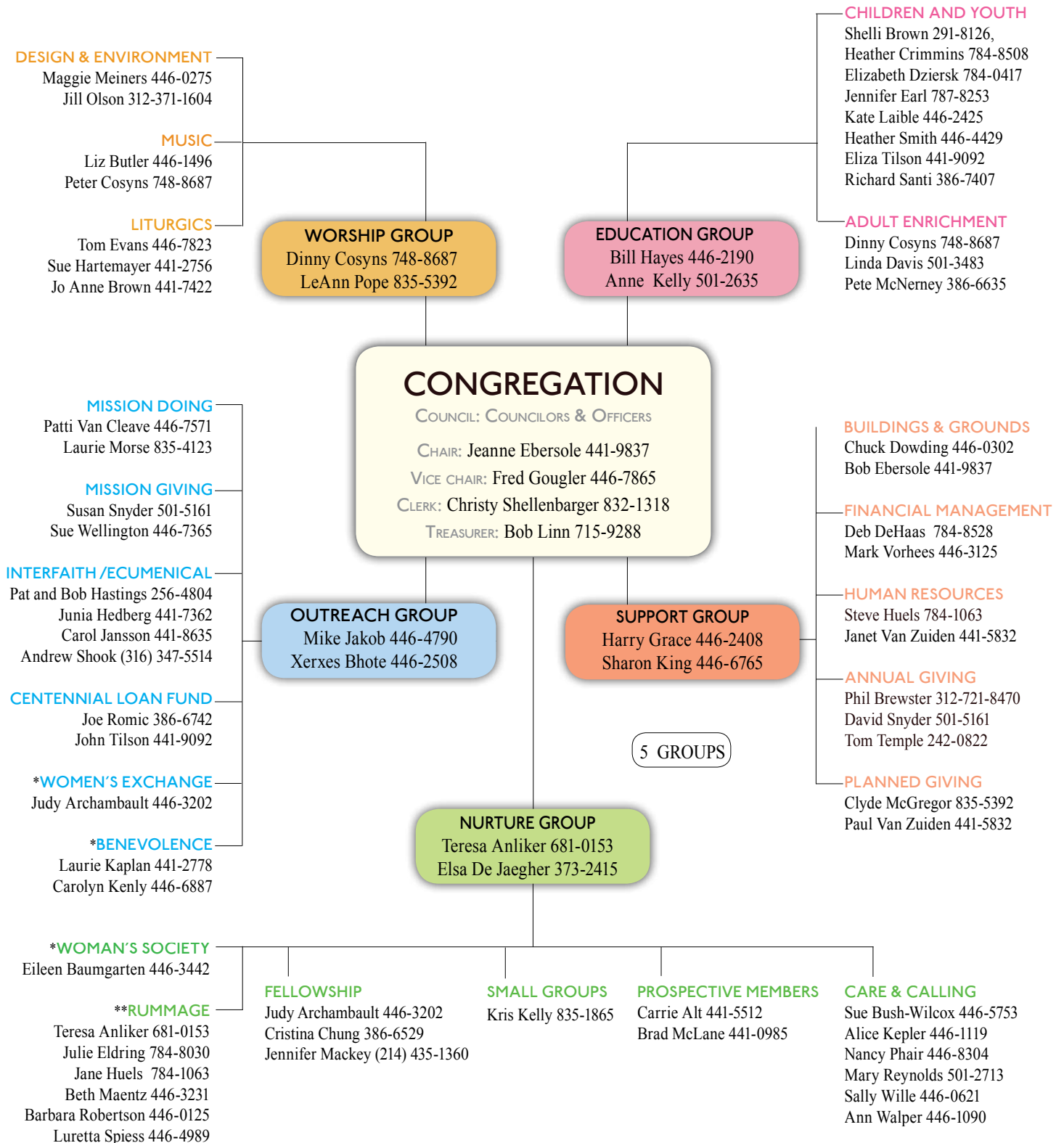
Harry Grace²⁰¹⁷⁽²⁾²⁰¹⁹, **Sharon King**²⁰¹⁸⁽¹⁾²⁰²²
Chuck Dowding²⁰¹⁸⁽²⁾²⁰²⁰, Bob Ebersole²⁰¹⁸⁽²⁾²⁰²⁰
Deb DeHaas²⁰¹⁸⁽¹⁾²⁰²², Mark Vorhees²⁰¹⁷⁽¹⁾²⁰²¹
Steve Huels²⁰¹⁷⁽¹⁾²⁰²¹, Janet Van Zuiden²⁰¹⁷⁽¹⁾²⁰²¹
Phil Brewster²⁰¹⁷⁽¹⁾²⁰²¹, David Snyder²⁰¹⁷⁽¹⁾²⁰²¹, Tom Temple²⁰¹⁷⁽¹⁾²⁰²¹
Clyde McGregor²⁰¹⁸⁽²⁾²⁰²⁰, Paul Van Zuiden²⁰¹⁸⁽²⁾²⁰²⁰

OUTREACH GROUP

Councilors
Mission Doing
Mission Giving
Interfaith
Centennial Loan

Mike Jakob²⁰¹⁸⁽²⁾²⁰²⁰, Xerxes Bhote²⁰¹⁷⁽²⁾²⁰¹⁹
Laurie Morse²⁰¹⁸⁽²⁾²⁰²⁰, Patti Van Cleave²⁰¹⁸⁽²⁾²⁰²⁰
Susan Snyder^{2017(Max)}, Sue Wellington^{2017(Max)}
Pat and Bob Hastings^{2018(Max)}, Junia Hedberg^{2018(Max)}
Carol Jansson²⁰¹⁷⁽¹⁾²⁰²¹, Andrew Shook²⁰¹⁷⁽¹⁾²⁰²¹
John Tilson²⁰¹⁸⁽²⁾²⁰²⁰, Joe Romic²⁰¹⁷⁽¹⁾²⁰²¹

MCC CUMULATIVE INVESTMENT RESERVES (CIR) REPORT: Fund Balances		Income/Expense		Allotments		December 2015				
G/L	Monthly	Market Value	Share	Purchases	Exchanges	Sales/Fees	Capital	Actual	Closing	Market Value
ACCT	ASSETS	11/30/2015		Receipts		Inc./Exp./Frc.	Gain/Loss	Inc./Exp.	Share	12/31/15
	UNRESTRICTED:									
	VANGUARD:									
140.00	Growth Index Fund Adm (0509)	681,230.74	0.16	2,575.93			(18,903.96)	2,575.93	0.16	664,902.71
140.50	LP Inflation Prot Bond Idx (5119)	207,826.37	0.05	1,741.34			(3,646.03)	1,741.34	0.05	205,921.68
141.00	Inter-Term Index Adm (3314)	206,692.52	0.05	1,103.52			(2,360.21)	1,103.52	0.05	205,435.83
141.50	LP Bond Index Fund (0522)	208,226.50	0.05	1,035.89			(3,263.52)	1,035.89	0.05	205,998.87
141.75	Mid-Cap Index Fund Adm (5859)	442,197.52	0.10	2,159.73			(13,923.94)	2,159.73	0.10	430,433.31
142.50	Prime Money Market (0030)	147,397.20	0.03	24.55			0.00	24.55	0.03	147,421.75
142.75	Short Term Bond Index Adm (5132)	413,666.13	0.10	752.01			(1,973.85)	752.01	0.10	412,444.29
143.50	Small Cap Growth Index Fund (0861)	223,606.11	0.05	749.34			(8,371.69)	749.34	0.05	215,983.76
144.00	Small Cap Value Index Fund (0860)	225,522.27	0.05	1,528.05			(12,580.72)	1,528.05	0.05	214,469.60
144.25	Total Intl Stock Ix Admiral (0569)	872,670.58	0.20	6,613.26			(24,390.97)	6,613.26	0.20	854,992.87
144.75	Value Index Fund Adm (0506)	674,386.64	0.16	4,770.92			(11,357.49)	4,770.92	0.16	667,800.07
	TOTAL UNRESTRICTED:	4,303,422.58	1.00	23,054.54	0.00	0.00	(100,772.38)	23,054.54	1.00	4,225,704.74
	PERMANENTLY RESTRICTED:									
	ACCT	FUND NAME	Market Value	Share	Deposited	Due fr. Pfrs.	Due From Rcc. Inc./Exp./Frc.	Investment	Capital	Balance
			11/30/2015		Receipts	Pfrs.	Inc./Exp./Frc.	Inc. & Exp.	Gain/Loss	12/31/15
450.00		Blatchford Fund	93,071.21	0.02				498.61	(2,179.43)	91,390.39
451.00		D & R Jones Music Intern Fund	323,074.53	0.08				1,730.79	(7,565.37)	316,594.05
452.00		Churchyard	30,000.00	0.01				0.00	0.00	30,000.00
453.00		Christian Ed.	377,589.62	0.09				2,022.84	(8,841.94)	369,118.53
454.00		Mission Endowment	372,312.45	0.09				1,994.57	(8,718.37)	364,072.16
455.00		Jadel Restricted Income Fund	205,107.08	0.05				1,098.81	(4,802.95)	200,571.20
456.00		Gen Restricted Endowmt Fnd	524,639.71	0.12				2,810.63	(12,285.38)	529,896.84
	TEMPORARILY RESTRICTED:									
		Retirement Benefits Fund	402,148.20	0.09				2,154.41	(9,417.02)	382,695.09
	UNRESTRICTED DESIGNATED:									
416.00		Churchyard (360)	158,135.98	0.04		500.00	(650.00)	1,007.89	(4,405.54)	154,588.33
417.00		Heritage Trust (Incl Trsf of PDr)	119,681.28	0.03		11,104.93		641.16	(2,802.55)	128,624.82
405.00		Discretionary	1,589,518.77	0.37			(6,885.62)	9,094.81	(39,753.82)	1,551,974.14
	SUBTOTAL:		4,195,278.83	0.97	0.00	28,604.93	(26,640.37)	23,054.54	(100,772.38)	4,119,525.55
		Due to MCC	108,143.73	0.03			(1,964.56)	Tsfr. to Discr.	Tsfr. to Discr.	106,179.17
	TOTAL:		4,303,422.56	1.00	0.00		0.00	23,054.54	(100,772.38)	4,225,704.72



* Covenant Group ** Coordinates with Outreach Group but reports to Woman's Society Board

Area code is 847 for all phone numbers, unless otherwise noted.